

Long time coming



McClellin finds another way to dominate

Marsing High School senior linebacker Shea McClellin reaches to corral a loose ball in the second quarter of Saturday's state play-in game against visiting Nampa Christian. McClellin corralled the fumble and rumbled 12 yards for the second touchdown of the game. Photo by Gregg Garrett

Huskies hunker down, grab first playoff win since 1989

McClellin rushes for 229 yards, but it's the defense of a junior that turns the tide against Nampa Christian

Junior Ethan Sauer had been dwarfed all day Saturday by larger football players.

But for one shining moment, the 5-foot-10 junior defensive back for Marsing High School stood tall against Nampa Christian, and it helped the Huskies post a 34-22 home victory in a state play-in game.

It was the first postseason triumph in 17 years for the Marsing program.

"We're extremely proud," Huskies coach Don Heller said. "It's been a long time, since 1989, since we won a playoff game."

Sauer held his ground and stopped Trojans quarterback Tommy Hickey short of the goal line on a fourth-and-goal play 2½ minutes into the third quarter and preserved Marsing's tenuous 22-14 advantage.

On one snap, Sauer played a vital role in the watershed victory for the Huskies (6-3), who travel north for a 2 p.m. MST game Saturday against Central Idaho Conference champion Orofino (8-1).

"They remind us a lot of Nampa Christian," Heller said of the Maniacs from District II. "They have the same size on the line. Their backs are good."

"They hit, and they're going to have some momentum because they beat Kamiah (46-6 on Friday on the road)."

Orofino outscored its last two regular-season opponents 90-12.

Sauer's hit capped a goal-line stand that gave Marsing a truckload of momentum against Nampa Christian.

"That big defensive stop was key," Heller said. "That got them pumped up on the offensive line,

and we pounded (the Trojans) four plays in a row and we were gone."

That's "we" as in 6-4 fullback Shea McClellin. Five plays after helping Sauer stop Hickey, the Boise State-bound senior broke three tackles, scooped at Andrew Vander Woude's feeble attempt to push him out of bounds at the Huskies' 35 and sprinted down the Trojans' sideline to complete a 77-yard run that wrested momentum from Nampa Christian.

"All the seniors were fired up," McClellin said. "This could (have been) our last game, and we didn't want to have it that way."

"We came in fired up and just came to play."

Although he's an underclassman, Sauer showed that fortitude as well. Five plays before halting Hickey on fourth down, the 155-pounder lost a battle with Nampa Christian's 6-5, 190-pound tight end, Donnie Heida, on a 33-yard pass play that set up the Trojans

— to page 6B

JV beats Adrian at district volleyball

Mustangs exact revenge vs. HDL rival; both reach 1A state tourney

The Jordan Valley High School volleyball team got its revenge Saturday, capturing the district championship in the process.

The Mustangs (15-1 overall) earned a first-round bye in the 1A Oregon state tournament by knocking off rival Adrian 25-16, 25-20, 25-16 in the district championship match in John Day, Ore.

It was the first loss of the season for the Antelopes, who eight days earlier had edged visiting Jordan Valley in five games to capture the High Desert League championship.

"We kept attacking the ball," Adrian coach Aimee Goss said. "But when you serve in the net seven times and hit 19 balls out in the championship match, it will be hard to be competitive against a team like Jordan Valley."

The Mustangs, runners-up to state champion Dufur in the 2005 tournament, play host to a second-round game Saturday. The Antelopes (22-2 overall) plays host to Damascus Christian in a 7 p.m. first-round match today in Adrian. A win puts Adrian in a second-round match against Crane.

Winners from Saturday's action will move on to the Nov. 10-11 tournament action at Pacific University in Forest Grove, Ore.

While the Mustangs had qualified for the state tournament with a tense, marathon, five-game comeback 25-11, 26-28, 24-26, 27-25, 20-18 win over Prairie City, the team's sights were fixed firmly on a possible rematch with Adrian.

That came in the championship match.

The Antelopes swept Crane 25-16, 25-12, 25-16 in the second round.

Adrian received 13 kills and five blocks from Branstiter and 10 assists from Bowns and reached the district final only to find arch-rival Jordan Valley waiting.

"We told the girls that they just needed to relax and have a good time the pressure was off

— to page 3B



Hollerin' Heller

Years of building a program peaked Saturday for Marsing High School coach Don Heller with his first playoff win as Huskies coach. Photo by Gregg Garrett

Sports



Thatcher placest 55th in state meet
Homedale High School senior Scott Thatcher out-kicks Weiser's Hank Garrison to the finish line of the 3A District III cross country championship meet. Thatcher was 55th at the state championship meet in Lewiston on Saturday. Photo by Tim Rosandick

Trojans' athletes finish in State pack

Homedale High School senior Scott Thatcher finished 55th Saturday in the 3A cross country state meet in Lewiston.

Thatcher, who qualified for the state meet by kicking past Weiser's Hank Garrison to win the District III championship, finished the 5-kilometer state championship course at Hell's Gate State Park in 19 minutes, 33.61 seconds. The time was almost 2 minutes slower than the personal best he set during the district race.

Sophomore Tyler Gibson placed 75th for the Trojans with a time of 20:37.66.

Garrison was the third District III athlete to finish the boys race, crossing the line in 29th. Sophomore Dominic Bolen from Payette was the top District III performer, with a 20th-place time of 18:11.05.

Timberlake senior Frank Lagrimanta won the state championship by more than 49 seconds with a time of 16:01.64.



Huskies' leader of future gets accolades today
Marsing High School sophomore Kaitie Kent, center, makes a hit earlier this season against Nampa Christian as teammates, from left, senior Cristina Cuevas, junior CC Zanardi and senior Kortni Scott ready for the next play. Coaches in the 2A Western Idaho Conference placed Kent and Scott on the all-conference team in voting last month. Photo by Brandy Smith, MHS yearbook

WIC coaches acknowledge Marsing's volleyball talent

Gutsy senior earns spot on all-conference first team

Kortni Scott's determination was a beacon for her Marsing High School volleyball teammates during a murky season. The coaches in the 2A Western Idaho Conference saw the senior's fire and placed her on the first-team all-conference list.

"She is an outstanding leader with a never-say-die attitude, going to the floor to dig or chasing down the ball to keep it in play," Marsing coach Loma Bittick said of her team's co-captain.

"She has always looked for a way to make her team play their best. She has been a great role model for our younger players and has left her mark on Marsing volleyball."

Bittick said poor health kept the senior setter out of the team's final match in the 2A District III

tournament. The Huskies ended the season 0-15 after taking the tournament's second- and third-seeded clubs to four games each.

"Our record doesn't reflect the effort and improvement that the team made," Bittick said. "They improved each week and played strong at both tournaments — Wilder and Cole Valley — with wins over Greenleaf, Nyssa, Wilder and Parma."

Greenleaf Friends Academy went on to win the 1A Western Idaho Conference championship.

Taryn Chenoweth, a co-captain and the Huskies' leading hitter in 2006, earned honorable mention on the all-conference team.

"She was an intense leader and positive role model for the younger players," Bittick said,



Kortni Scott

adding that the senior was the best server and defensive player on the roster this year. "She worked hard and pushed her teammates to do so as well."

Bittick said Chenoweth and Scott both are looking into playing volleyball in college.

Scott and Chenoweth are scheduled to play in the 2A/3A District III senior all-star match Monday in Fruitland. The 1A match starts at 6 p.m., and the 2A/3A contest is scheduled to start at 7:45 p.m.

Sophomore setter/hitter Kaitie Kent also was placed on the all-conference honorable mention list.

"Kaitie Kent is a gutsy player who is willing to do whatever needs to be done," Bittick said. "She stepped up and played setter in the absence of Kortni at the end of the season and did a good job, with compliments from coaches and officials."

"She will bring her experience in multiple roles to the team next year and help lead the program."

Marsing Huskies

FOOTBALL AT STATE

Saturday, Nov. 4, 2A state playoff game at Orofino, 2 p.m. MST

GO HUSKIES!

SALES, SERVICE, REPAIRS & INSTALLATION
896-4162

896-4185

896-4624

896-4331

896-4222

The Owyhee Avalanche

How can we ask the young to reach for the stars when their view is clouded by air and light pollution, too much TV, too many computer games, too much stuff, and too much hectic activity?

ELECT
Bill Chisholm
District 23 Senate

paid for by Chisholm For Senate Comm., P.O. Box 21, Filer, Idaho 83328, Rich Carlson, treas.

Sports

Public Notice of Intent
To Propose Or Promulgate
New Or Changed Agency Rules

The following agencies of the state of Idaho have published the complete text and all related, pertinent information concerning their intent to change or make the following rules in the new issue of the state Administrative Bulletin.

The written comment deadline is November 22, 2006.

Temp & Prop indicates the rule is both temporary and proposed.

** Indicates that a public hearing has been scheduled.

IDAPA 16 – DEPARTMENT OF HEALTH AND WELFARE
PO Box 83720, Boise, ID 83720-0036

16-0305-0607, Rules Governing Eligibility for Aid to the Aged, Blind and Disabled. (Temp & Prop) Removes the Traumatic Brain Injury (TBI) Waiver from the rule and places it in IDAPA 16.03.10 and deletes references to IDAPA 16.03.09.

**16-0310-0603, Medicaid Enhanced Plan Benefits. (Temp & Prop) Services that were covered in the TBI Waiver services for habilitation, supported employment, behavior consultation, and crisis management will be provided under the Aged and Disabled Waiver Services rules in this chapter.

**16-0506-0601, Criminal History and Background Checks. Notice of Public Meetings – informational and training meetings are being held on this docket. See Bulletin for dates, times and places.

IDAPA 18 – DEPARTMENT OF INSURANCE
PO Box 83720, Boise, ID 83720-0043

18-0160-0601, Long-Term Care Insurance Minimum Standards. (Temp & Prop) Implements the Long Term Care Partnership Program and incorporate the latest changes to the model Long Term Care Minimum Standards Rule adopted by the National Association of Insurance Commissioners and are intended to make Idaho's rule consistent with the standards most likely to be adopted by other states.

IDAPA 24 – BUREAU OF OCCUPATIONAL LICENSES
1109 Main St., Suite 220, Boise, ID 83702

24-1501-0602, Rules of the Idaho Licensing Board of Professional Counselors and Marriage and Family Therapists. Increases license renewal fee for Counselors and Marriage and Family Therapists to \$100.

IDAPA 41 - PUBLIC HEALTH DISTRICT #1
8500 N. Atlas Rd, Hayden, ID 83835

**41-0101-0601, Rules of Public Health District #1. Notice of Public Hearing. See Bulletin for dates, times and places.

Please refer to the Idaho Administrative Bulletin Volume 06-11, November 1, 2006, for notices and text of all rulemakings, public hearing schedules, Governor's executive orders, and agency contact information.

Issues of the Idaho Administrative Bulletin
can be viewed at the
county law libraries or online

To view the Bulletin or Code or for information on purchasing the Bulletin and other rules publications, visit our website at www.adm.idaho.gov/adminrules/ or call (208) 332-1820 or write the Dept. of Administration, Office of Administrative Rules, 650 W. State St., Room 100, Boise, ID 83720-0306.

HMS athletes warm up to winter

Homedale Middle School's athletes shift gears early next week for the winter seasons for basketball and wrestling.

The girls basketball teams for seventh- and eighth-graders begin Snake River Valley play Tuesday.

The Trojans' seventh-grade teams kick off the season at 4:15 p.m. in McCall against Payette Lakes Middle School. The eighth-graders meet Payette Lakes in Homedale at 4:15 p.m.

Homedale's seventh-graders take on Fruitland at home at 4:15 p.m. Nov. 9, while the eighth-graders are in Fruitland for a 4:15 p.m. tipoff that day.

The seventh-graders are coached by Lucia Asumendi-Mereness and Stuart Emry. Kevin Cornwall and Shari Kirk guide the eighth-graders.

"The opportunity to have B coaches has already made a huge

difference in practice," Asumendi-Mereness wrote in an e-mail. "Shari and Stuart are great additions to the middle school staff and will help the girls and the program move forward in a positive way."

The six-time defending District III champion wrestling program also is ready to shoot for another title. Homedale High School coach Toby Johnson has pulled double duty for the past three seasons as he also has guided the middle school team.

"We are looking forward to building on the success that we've had and encourage more kids to come and be a part of something special," said Asumendi-Mereness, who also is the school's activities director. "Wrestling gives kids opportunities to participate right away."

Fall sports wrapup

The seventh-grade volleyball

team reached the championship match of the district tournament before losing and settling for second place this season.

The eighth-graders finished third in their district tournament in McCall.

On the football field, HMS' seventh-graders grabbed third place in the district with a 4-2 record after a win over Payette.

The eighth-graders finished 3-3 after a heartbreaking two-point loss in the final seconds of their game against Weiser.

The cross country team wrapped up its season in Ontario, Ore., with the district meet. Hampered by illness, neither the boys nor the girls were able to field a complete squad for the season finale.

But coach Nick Schamber has a bright future ahead, according to Asumendi-Mereness, because most of this year's runners were sixth-graders.

Sports tracker

A look at Owyhee County athletes competing beyond high school

Jeremy Ensley won four state championships while wrestling for Homedale High School. Now, the 2006 Homedale graduate is hitting the mat for Northwest College of Powell, Wyo.

He makes his collegiate debut Saturday.

Ensley, who was sidelined briefly two weeks ago by a hand injury, will bat lead-off for the Trappers in their season-opening NWC Open on Saturday. The true freshman will wrestle at 125 pounds for veteran coach Jim Zeigler.

Northwest won the National Junior College Athletics Association national championship in 2004.



Ready for the next challenge

Former Trojans wrestler Jeremy Ensley suits up for Northwest College on Saturday in the NWC Open. Photo by Powell (Wyo.) Tribune

Great Rates. Exceptional Service.
Call us for the home loan you deserve.



Shari Aleksich
344-0529
Boise



Tracy Thorpe
465-6333
Nampa



Judie Phariss
454-8800
Caldwell



Bruce Shuey
386-9902
Garden City



Lorene Buckway
344-5642
Regional Manager



Sandy Newman
344-0247
Boise



Alice Whitney
895-0295
El Dorado/Meridian



Patty Backus
888-1416
Meridian

The home loan you need. The expertise you want. Get them both at Farmers & Merchants. We offer the most complete range of mortgages anywhere, plus local decision-making, flexibility and unparalleled service. Call or stop by for a quote. We'll make you feel right at home.



FARMERS & MERCHANTS
MORTGAGE CENTER | A BANK OF THE CASCADES COMPANY

MORTGAGE CENTER | 209 N. 12TH ST. BOISE 208-331-0019 • WWW.FMSB.COM • MEMBER FDIC • EQUAL HOUSING LENDER

Sports

PREP FOOTBALL STATISTICS

Marsing offense							
Passing	Comp.	Att.	Int.	Pct.	Yards	YPG	TDs
Quebrado	20	46	4	.435	269	67.3	3
Heller	26	67	9	.388	393	49.1	2
Totals	46	113	13	.407	662	73.6	5
Marsing defense							
Rushing	G	Att.	Yards	YPC	YPG	TDs	
McClellin	9	224	1,747	7.8	194.1	17	
Sauer	9	53	227	4.3	25.2	1	
Meyers	9	41	246	6.0	27.3	2	
Quebrado	9	39	146	3.7	16.2	2	
Dines	3	9	30	3.3	10.0	1	
Finley	4	8	30	3.8	7.5	0	
Marcial	7	10	39	3.9	5.6	0	
Miller	1	1	7	7.0	7.0	0	
Young	2	2	5	2.5	2.5	0	
Walgamott	1	1	3	3.0	3.0	0	
Martinez	1	1	2	2.0	2.0	0	
Galligan	1	1	-1	-1.0	-1.0	0	
Paramo	1	2	-8	-4.0	-8.0	0	
Heller	8	23	-59	-2.6	-7.4	0	
Totals	9	418	2,415	5.8	268.3	23	
Receiving	G	Rec.	Yards	YPR	YPG	TDs	
Salvas	9	22	396	18.0	44.0	3	
Ineck	3	8	59	7.4	19.7	0	
Quebrado	9	4	49	12.3	5.4	0	
Meyers	9	6	41	6.8	4.6	1	
Martinez	2	1	35	35.0	17.5	1	
Sauer	9	5	38	7.6	4.2	0	
Finley	4	1	21	21.0	5.3	0	
Marcial	7	1	11	11.0	1.6	0	
McClellin	9	2	7	3.5	0.8	0	
Totals	9	50	657	13.1	73.0	5	
Scoring	G	TD	FG	PAT	2-PAT	Total	Avg.
McClellin	9	23	0	4	8	156	17.3
Meyers	9	3	0	0	2	22	2.4
Quebrado	9	3	0	0	2	22	2.4
Salvas	9	3	0	0	0	18	2.0
Dines	7	1	0	0	2	10	1.4
Martinez	2	1	0	0	0	6	3.0
Miller	5	1	0	0	0	6	1.2
Sauer	9	1	0	0	0	6	0.7
Galvez	8	0	0	3	0	3	0.4
Totals	9	36	0	2	14	251	27.9

Homedale offense							
Final							
Passing	Comp.	Att.	Int.	Pct.	Yards	YPG	TDs
Krzesnik	40	93	11	.430	505	63.1	10
Cline	1	4	0	.250	-1	-0.5	0
Totals	41	97	11	.423	504	63.0	10
Homedale defense							
Rushing	G	Att.	Yards	YPC	YPG	TDs	
Vance	8	86	429	5.0	53.6	3	
Martinat	7	16	180	11.3	25.7	0	
Wilhelm	8	39	173	4.4	21.6	4	
Sitko	8	84	284	3.4	35.5	4	
Valadez	6	29	66	2.3	11.0	0	
Krzesnik	8	12	5	0.4	0.6	1	
Garcia	6	2	-31	-15.5	-5.2	0	
Johnson	4	42	141	3.4	35.3	2	
Zenor	1	1	3	3.0	3.0	0	
Totals	8	314	1,243	4.0	155.4	14	
Receiving	G	Rec.	Yards	YPR	YPG	TDs	
Martinat	7	12	173	14.4	24.7	4	
Wilhelm	8	6	53	8.8	6.6	1	
Sweet	8	9	74	8.2	9.3	0	
Tolmie	8	6	101	16.8	12.6	2	
Hansen	8	4	70	17.5	8.8	3	
Vance	8	1	5	5.0	0.6	0	
Christoffersen	1	1	13	13.0	13.0	0	
Johnson	4	1	-1	-1.0	-0.3	0	
Sitko	8	1	16	16.0	2.0	0	
Totals	8	41	504	12.3	63.0	10	
Scoring	G	TD	FG	PAT	2-PAT	Total	Avg.
Vance	8	3	0	0	1	20	2.5
Martinat	7	6	0	0	0	36	5.1
Tolmie	8	2	0	0	0	12	1.5
Wilhelm	8	5	0	0	0	30	3.8
Hansen	8	3	0	0	0	18	2.3
Krzesnik	8	1	0	0	1	8	1.0
Sitko	8	5	0	0	1	32	4.0
Jolley	8	0	0	5	0	5	0.6
Johnson	4	2	0	6	2	22	5.5
Totals	8	27	0	11	5	183	22.9

PREP STANDINGS

Football				
3A SRV	Conf.		All	
Final	W	L	W	L
Fruitland	4	0	8	1
Weiser	3	1	5	4
McCall-Donnelly	2	2	3	6
Homedale	1	3	5	3
Payette	0	4	1	7
This week's games				
(State quarterfinal, Saturday)				
Gooding at Fruitland, 1 p.m.				

Last week's scores				
(State playoffs, first round)				
Gooding 47, McCall-Donnelly 14				
Fruitland 50, Bonners Ferry 0				
Declo 8, Weiser 6				
2A WIC	Conf.		All	
Final	W	L	W	L
New Plymouth	5	0	7	2
Marsing	4	1	6	3
Nampa Christian	3	2	3	6
Melba	2	3	2	7
Parma	1	4	2	6

Rimrock offense							
Passing	Comp.	Att.	Int.	Pct.	Yards	YPG	TDs
Hofer	16	42	9	.381	177	25.3	2
Snyder	19	57	6	.333	262	29.1	3
Araujo	4	8	0	.500	188	29.5	0
Totals	39	107	15	.364	557	61.9	5
Rushing	G	Att.	Yards	YPC	YPG	TDs	
Araujo	7	102	644	6.3	92.0	5	
Snyder	9	116	467	4.0	51.9	6	
Hofer	9	50	210	4.2	23.3	1	
C. Hipwell	1	8	32	4.0	32.0	0	
Schiermeier	6	6	28	4.7	4.7	0	
Steiner	7	10	19	1.9	2.7	0	
Salinas	2	2	4	2.0	2.0	1	
Totals	9	294	1,404	4.8	156.0	13	
Receiving	G	Rec.	Yards	YPR	YPG	TDs	
Araujo	7	13	104	8.0	14.9	1	
Snyder	9	4	89	22.3	9.9	1	
Simper	5	6	134	22.3	26.8	0	
Richardson	9	5	72	14.4	8.0	2	
Steiner	7	2	105	52.5	15.0	1	
Langfitt	3	4	40	10.0	13.3	0	
T. Hipwell	2	1	8	8.0	4.0	0	
Hofer	9	2	8	4.0	0.9	0	
Totals	9	37	560	15.1	62.2	5	
Scoring	G	TD	FG	PAT	2-PAT	Total	Avg.
Snyder	9	7	0	0	2	46	5.1
Araujo	7	6	0	0	4	44	6.3
Richardson	9	2	0	0	2	16	1.8
Hofer	8	1	0	0	1	8	1.0
Salinas	9	1	0	0	2	10	1.1
Steiner	7	1	0	0	0	6	0.9
Totals	9	18	0	0	11	130	14.4

Cole Valley Chr.	0	5	0	8
This week's games				
(2A state playoffs, Saturday)				
Marsing at Orofino, 2 p.m. MST				
Kamiath at New Plymouth, 2 p.m. MST				

Last week's scores				
(State play-in games)				
Marsing 34, Nampa Christian 22				
New Plymouth 14, Melba 3				
End Regular Season				

1A, Div. I	Conf.		All	
Final	W	L	W	L
Horseshoe Bend	6	0	8	0
Council	5	1	6	3
Wilder	5	2	6	3
Cascade	2	4	3	5
Tri-Valley	3	3	3	5
Rimrock	1	5	2	8
Idaho City	0	7	2	7

This week's games				
(State playoffs, first round, Saturday)				
Hagerman, Oakley or Lighthouse				
Christian at Horseshoe Bend, 1 p.m.				
Council at Raft River, 1 p.m.				
End Regular Season				

Last week's scores				
Rimrock 36, Idaho City 28				
Council 53, Wilder 8				
Tri-Valley 58, Cascade 28				
End Regular Season				

High Desert	Conf.		All	
Final	W	L	W	L
Crane	7	0	8	0
Prairie City	6	1	7	1
Burnt River	5	2	6	2
Adrian	3	4	3	5
Jordan Valley	3	4	3	4
Spray-Mitchell	3	4	3	5
Hunt.-Harper	1	6	1	7
Mon.-Day.	0	7	0	7

This week's game				
(Played Friday)				
North Lake at Crane, 2 p.m. MST				
End Regular Season				

Last week's scores				
Spray-Mitchell 22, Adrian 18				
Crane 54, Jordan Valley 6				
Huntington-Harper 44, Monument-Dayville 8				
Prairie City 44, Burnt River 34				

PREP RESULTS

Football				
2A playoff				
Marsing 34				
Nampa Christian 22				
Nampa Chr.	0	14	0	8 — 22
Marsing	16	6	0	12 — 34
First quarter				
Mar — McClellin 13 run (McClellin run)				

Rimrock holds fast for victory

Idaho City High School had four chances to ruin Rimrock's football season finale Friday. But the Raiders' defense turned back the Wildcats' 1st-and-goal situation with a minute left in the game to preserve a 36-28 1A, Div. I road victory.

"They had the ball on the 3-yard line with 20 seconds left in the game with fourth down, and we sacked the quarterback on a sweep," second-year Rimrock coach Jim Clark said. "It was a very good game."

After a scoreless first quarter, Rimrock (2-8 overall, 1-5 1A, Div. I) came up with an answer for every touchdown Idaho City (2-7, 0-7) mustered.

Sophomore T.J. Snyder heaved a 65-yard touchdown pass to Isaac Steiner to get the scoring started in the second quarter.

The first of three rushing touchdowns by freshman tailback Ricardo Araujo and Carlos Salinas' first of two two-point conversions put the Raiders ahead, 16-8, at halftime.

Araujo battered the Wildcats for 105 yards on 21 rushes. He also completed two passes for 38 yards.

Hampered by a bout of West Nile Virus throughout the season, Araujo capped his first year of high school football by scoring on second-half runs of 13 and five yards. His 5-yarder and a PAT run by Salinas snapped a 28-28 tie.

Snyder also scored on a 3-yard run in the fourth quarter. He completed four of nine passes for 95 yards.

Catch all the news!

Every week in

The Owyhee Avalanche

337-4681

Sports

✓ Huskies

on Marsing’s 8-yard line.

Sauer’s ability to shake off the long play and stuff the short run was emblematic of the determination the entire Marsing program showed during its first playoff game in five years.

“We came in confident because we didn’t play well at all against them the last time and we won (an 13-12 victory in Nampa on Oct. 13),” Heller said.

“We figured if we took care of that stuff and didn’t have turnovers, we could get the job done.”

Marsing did, indeed, take care of business Saturday, and McClellin played more than a small part.

The senior racked up another 200-yard rushing game, rumbling to 229 yards on 31 carries. And he scored every point the Huskies put up against the visiting Trojans.

He paced Marsing to a 22-0 advantage with a pair of short touchdown runs and another de-



Ethan Sauer

fensive TD.

Already a master of returning interceptions for scores, McClellin picked a loose football out of the air and raced 12 yards for a fumble return touchdown in the first quarter.

“Someone held (the Trojans ball carrier) up and the ball just popped up and I ran it back,” McClellin said.

Just like that. Pretty as you please. Yes ma’am and thank you.

But the best way to start a game in front of a raucous house also may have been the worst way to begin a postseason that united a town and — gasp! — cancelled a

benefit bingo night.

“Jumping on them early, the kids kind of let down, thinking, ‘Oh, we can relax. We’re up on them,’” Heller said.

The Huskies didn’t kick back long, however. Nampa Christian ended the first half with a buzzer-beating touchdown by Eli Kamplain, and Marsing’s coaching staff settled in for a light snack of Huskies rump roast at halftime.

“After halftime, we just wanted to the momentum back and control the game,” McClellin said.

— JPB

Home

14

Visitor

0

WHAT’S THE SCORE?

The Avalanche wants to promote news of Owyhee County’s sports teams. Call to find out how to get your scores in the newspaper.

(208) 337-4681

The Owyhee Avalanche

CERTIFIED LOCKSMITH

**HARVEY'S**
AUTO PARTS
LOCKSMITH & TOWING
KEYS MADE • LOCKS REPAIRED
EMERGENCY OPENINGS
211 MAIN ST.
MARSING, ID • 896-4643

ELECTRICIAN

H&H ELECTRIC
Serving Owyhee
County for 25 years
Jeff Haylett
337-4881
Contractor License# 23189
Electrical Contractor - State of Idaho

SAND & GRAVEL

**Owyhee Sand,
Gravel & Concrete**
337-5057
573-2341 • 573-2343 • 573-2339
HOMEDALE, IDAHO
ALL TYPES OF ROCK & DIRT
STATE CERTIFIED DRAIN ROCK
FREE ESTIMATES ON ROADS & DRIVEWAYS
Chuck, Ray & Bill Maxwell

CHIROPRACTIC

Marsing Chiropractic
Dr. Kathleen J. McKay
Corner of Reich and Main
in Marsing
896-5520
Gentle, effective care for:
Headaches • Backaches
Neck Pain • Automobile Accidents
Open Monday, Tuesday, Thursday and Friday 9-5
*Our office is concerned with two things, your health
and our reputation. Therefore, we only accept those
patients whom we sincerely believe we can help.*

VETERINARY SERVICES

**Carrie L. Arnhoelter, DVM**
*Large Animal Medicine & Surgery
Mobile Small Animal Care*
Cell: (208) 249-1835
Home: (208) 482-9212
Licensed in Idaho and Oregon

CARPENTRY

**WE'VE BEEN SERVING
CANYON COUNTY FOR THE
PAST 11 YEARS. WE
WELCOME YOUR BUSINESS.
CALL FOR FREE ESTIMATES.
NO JOB TOO SMALL.
BOB PAASCH 482-7204
BOB'S CARPENTRY • WILDER
Idaho Lic # RCT-12463**

HEATING & COOLING

**BAUER**
HEATING & COOLING
RESIDENTIAL & COMMERCIAL
NEW CONSTRUCTION • REMODELS
HEATING & COOLING
SERVICE • SALES • REPAIR
CALL 337-5812
573-1788 • 573-7147
Se Habla Español - 899-3428
FINANCING AVAILABLE O.A.C.

LANDSCAPING

Kelly Landscaping
GREG KELLY - OWNER
Sprinkler System -
Installation, Maintenance & Blow-Outs
Fences • Sod • Concrete Curbs •
Rock Entryways
FREE ESTIMATES
Home - (208) 337-4343
Cell - (208) 919-3364
Idaho License # RCT-14906

SPORTING CLAYS

**IDAHO
SPORTING CLAYS**
337-4826
3 Miles south on Hwy. 95 from Homedale,
turn West on Graveyard Point rd., go 4
miles and turn South on Sage. Go over the
first hill and we're on the left.
GIFT CERTIFICATES AVAILABLE

CONSTRUCTION

**SHIPPY BROTHERS
CONSTRUCTION**
Land Leveling • Earth Moving
Fields • Ponds • Roads
Building Sites
22026 Market Road
Parma, Idaho
ICB# RCE-7073
Robert Shippy Rob Shippy
208/722-6727 208/722-6122

SIDING CONTRACTORS

**MGM**
Siding Contractors
William T. Bruce
1024 W. Finch Dr.
Nampa • 465-0214 • Fax 465-9831
ICB# RCE-300 • OCCB# 164231
*Vinyl, Steel & Aluminum Siding
Vinyl Windows*
**BALCOA**
Master Contractor
Craftsmanship You can Trust

GARAGE DOORS

**Mountain West**
Garage Doors
Wilder, Idaho - (208) 866-7334
**Repair & Replacement
Doors/Openers**
Replace Springs/Rollers
Senior Discounts • 24 Hour Service
Serving all SW Idaho
Free Estimates
Steve Hensley, Owner

BED LINERS

Quality work from start to finish
Auto Body by Alan
*Auto Glass • Frame & Unibody Repair • Colliston
Repair • Custom Patnt • All Work Guaranteed*
Alan Bahem
Rt. 1, Graveyard Pt. Rd.
Homedale, ID 83628
(208) 337-4837
Mobile 250-4837

AUTO BODY


Jessica Ehinger 353-4315 Tami Steinmetz 899-2263
**A Powerful
Team Working
For You!**


REAL ESTATE PROFESSIONALS


Jessica Ehinger 353-4315 Tami Steinmetz 899-2263
**A Powerful
Team Working
For You!**


CHIROPRACTIC

HOMEDALE CHIROPRACTIC CENTER
J. Edward Perkins, Jr. D.C.
111 S. Main - Homedale - 337-4900
Your Pain and Wellness Clinic
• Low Back Pain • Carpal Tunnel Syndrome
• Leg Pain • Whiplash/ Car Accident Injuries
• Neck Pain • Work Injuries
• Headache Pain • Sports Injuries
• Shoulder Pain • Custom Orthotics (Shoe inserts)
Call 208/337-4900 for a Free Consultation

CHIROPRACTIC

Homedale Clinic
Terry Reilly Health Services
Chip Roser, MD
Richard Ernest, CRNP
108 E. Idaho, Box 1058
Homedale, Idaho 83628
337-3189, Night 466-7869
Mon., Wed., Thurs. & Fri. 8:30 - 5:00
Tuesday 8:30 am - 9:00 pm

HEALTH SERVICES

Marsing Clinic
Terry Reilly Health Services
Faith Peterson, CRNP
Family Nurse Practitioner
Chip Roser, MD
201 Main Street, Marsing, Id. 83639
896-4159, Night 466-7869
Mon., Tues., Wed., & Fri. 8:00 - 5:00
Thursday 8:00 am - 9:00 pm

HEALTH SERVICES

Marsing Clinic
Terry Reilly Health Services
Faith Peterson, CRNP
Family Nurse Practitioner
Chip Roser, MD
201 Main Street, Marsing, Id. 83639
896-4159, Night 466-7869
Mon., Tues., Wed., & Fri. 8:00 - 5:00
Thursday 8:00 am - 9:00 pm

DENTAL SERVICES

Homedale Dental
Terry Reilly Health Services
Eight 2nd Street West,
Homedale, Idaho 83628
337-6101
Jim Neerings, DDS
Monday - Thursday 8:00-1:00/2:00-5:00
Accepting Emergency Walk-Ins Daily
We Accept Medicaid

AUTO REPAIR

May I Help You?
John Satterfield
ASE Master Mechanic
Full Service Auto Repair
D&D Tire - 896-4040
ION Plaza
Marsing

HEATING & COOLING

**PIONEER**
HEATING, COOLING AND REFRIGERATION
For all your heating and cooling needs,
with Quality, Integrity and Experience
Darin Miller 573-4998
Commercial and Residential
Service and Installation

CONCRETE

Ray Jensen
You want
CONCRETE?
I'll do it any way you want it.
27 Years Experience • Wilder
Licensed in Idaho and Oregon
ICB# RCT-69 • CCB# 168475
cell: 899-9502
home: 482-7757
Foundations and Flatwork

HOME HEALTH CARE

**Assisted Home
Health Care**
A Special Touch
Home Care, Inc.
Licensed Staff • Medicare
Medicaid • Private Pay
216 W. Idaho PO Box 933
Homedale, ID 83628
(208) 337-5343

TITLE & ESCROW

**Alliance Title & Escrow –
Your Owyhee County Specialist!**
**ALLIANCE**
TITLE & ESCROW CORP.
Homedale
7 West Colorado Ave.
(208) 337-5585
• Robin Aberasturi
Escrow Officer
• Vicky Ramirez
Bilingual Assistant

GFA 8th at State behind Owyhee runners

Ciara Law of Marsing finished 32nd Saturday in the 1A/2A cross country state championship meet for Greenleaf Friends Academy in Lewiston.

A senior, Law was the Grizzlies' top finisher in 22 minutes, 56.03 seconds. She helped Greenleaf to an eighth-place team finish.

The Grizzlies are coached by Homedale resident Sonja Graber.

Another Marsing resident, senior Brie-Joy Bemudez-Koch, was 69th with a time of 26:41.33 at Hells Gate State Park.



Waiting 'til the
last minute to
advertise?

Deadline is
Friday
at noon!

The Owyhee
Avalanche

Since 1865

Rubber
Stamps

Made to order

The
Owyhee
Avalanche

337-4681

PUBLIC NOTICE OF CONSTITUTIONAL AMENDMENTS

Two amendments to the Idaho Constitution will appear on the November 7, 2006 general election ballot. These amendments have been proposed to the people for ratification following action by the legislature. The proposed amendments, the Legislative Council's Statements of Meaning and Purpose and the Effect of Adoption, and the Statements for and the Statements Against are listed as follows:

H.J.R. 2

"Shall Article III, of the Constitution of the State of Idaho be amended by the addition of a new Section 28, to provide that a marriage between a man and a woman is the only domestic legal union that shall be valid or recognized in this state?".

**Legislative Council's
Statement of Meaning & Purpose
H.J.R. 2**

The proposed amendment would add a new Section 28 to Article III of the Constitution of the State of Idaho, stating that a marriage between a man and a woman is the only domestic legal union that shall be valid or recognized in the state of Idaho.

Effect of Adoption

If adopted, the proposed amendment would add language to the Constitution of the State of Idaho to provide that a marriage is only between a man and a woman. The language prohibits recognition by the state of Idaho and its political subdivisions of civil unions, domestic partnerships, or any other relationship that attempts to approximate marriage. The language further prohibits the state and its political subdivisions from granting any or all of the legal benefits of marriage to civil unions, domestic partnerships, or any other relationship that attempts to approximate marriage.

**Legislative Council's Statements
FOR The Proposed Amendment**

1. Same gender marriages are not currently allowed under Idaho statutes, and this amendment provides for the same prohibition at the state constitutional level to ensure that Idaho state courts do not allow or require the recognition of same gender marriages.
2. This amendment would prevent Idaho state courts from recognizing same gender marriages that are legally allowed in other states or other countries.
3. Because marriage is a public institution with special importance to society, the state of Idaho has a legitimate interest in establishing the marriage policy for its citizens.
4. This amendment does not prevent private industry from extending certain benefits to its employees nor does it limit a person's right to name medical and financial agents or to enter into contractual agreements.
5. This amendment does not deny any existing rights under Idaho law, but Idaho's current marriage laws could be weakened in the future without this amendment.

**Statements AGAINST
The Proposed Amendment**

1. This amendment is not needed since Idaho Code already limits the right to marry to one man and one woman and does not recognize out-of-state marriages that are in conflict with Idaho public policy.
2. This amendment uses the term "domestic legal union," which is not defined and will likely result in costly and lengthy litigation.
3. Because this amendment is broadly drafted, it could be construed to prohibit domestic partners of private-sector employees who receive health and other benefits from access to Idaho courts to enforce such benefits.
4. This amendment could in the future deny same gender couples in committed relationships the protections and benefits available to married couples, such as access to spousal Social Security benefits upon a partner's death, automatic "next of kin" emergency medical decisions and "family member" hospital visitation rights.
5. Just as the United States Constitution's Equal Protection Clause guarantees equal treatment under the law for all persons, Idaho's Constitution is designed to protect liberties and should not be amended to exclude certain people from legal protections.

S.J.R. 107

"Shall the Constitution of the State of Idaho be amended by the addition of a new Section 18, Article VII, to create an Idaho Millennium Permanent Endowment Fund to consist of eighty percent of the moneys received each year by the state of Idaho on and after January 1, 2007, pursuant to the Master Settlement Agreement entered into between tobacco product manufacturers and the state of Idaho, and any other moneys that may be appropriated or otherwise directed to the Idaho Millennium Permanent Endowment Fund by the legislature, including other moneys or assets that the Idaho Millennium Permanent Endowment Fund receives by bequest or private donation, to provide that such moneys shall remain inviolate and intact except that the state treasurer shall distribute five percent of the Idaho Millennium Permanent Endowment Fund's average monthly fair market value for the first twelve months of the preceding twenty-four months to the Idaho Millennium Income Fund, to provide that such distribution shall not exceed the Idaho Millennium Permanent Endowment Fund's fair market value on the first business day of July; to create an Idaho Millennium Income Fund, subject to appropriation as provided by law, to consist of the distribution from the Idaho Millennium Permanent Endowment Fund and other moneys that may be appropriated or otherwise directed to the Idaho Millennium Income Fund as provided by law; and to provide that the remaining twenty percent of the moneys received by the state of Idaho on and after January 1, 2007, pursuant to the Master Settlement Agreement entered into between tobacco product manufacturers and the state of Idaho and the earnings thereon, shall be deposited to the Idaho Millennium Fund, to provide that the Idaho Millennium Fund may consist of any other moneys that may be appropriated or otherwise directed to the Idaho Millennium Fund by the legislature, including other moneys or assets that the Idaho Millennium Fund receives by bequest or private donation, to provide that moneys in the Idaho Millennium Fund shall be allowed to accumulate, but shall not exceed a maximum limit as determined by law, to provide that any amounts so accumulating in the Idaho Millennium Fund which exceed the maximum limit, shall be transferred, no less than once a year, to the Idaho Millennium Permanent Endowment Fund and to provide that such moneys and earnings in the permanent endowment fund shall also remain inviolate and intact?".

**Legislative Council's
Statement of Meaning & Purpose
S.J.R. 107**

The purpose of this proposed amendment is to create a permanent endowment fund into which 80 percent of the money received

annually as a result of the settlement between the state of Idaho and tobacco product manufacturers will be deposited. The remaining 20 percent of the annual settlement will be deposited into the existing Idaho Millennium Fund. No portion of the permanent endowment fund, including earnings, will be transferred, used, or appropriated, with the exception that each year 5 percent of the endowment fund's average monthly fair market value will be distributed to an income fund that will be subject to appropriation. In addition, any money in the Idaho Millennium Fund in excess of a maximum amount, as provided by law, will be transferred annually to the permanent endowment fund.

Effect of Adoption

If the amendment is adopted, 80 percent of the tobacco settlement money Idaho receives each year will be deposited into a newly created permanent endowment fund and 20 percent will be deposited into the existing Idaho Millennium Fund. All money in the permanent endowment fund will remain in the fund, with the exception that every year 5 percent of the fund's average monthly fair market value will be deposited into an income fund that is subject to appropriation. In addition, each year any amount in the Idaho Millennium Fund in excess of a maximum amount, as provided by law, will be transferred to the permanent endowment fund.

**Legislative Council's Statements
FOR The Proposed Amendment**

1. Placing 80 percent of tobacco settlement money in a constitutional, permanent endowment fund will protect the settlement money from transfer to the General Fund in years of financial difficulty, while still allowing a fixed amount to be distributed and spent each year.
2. The creation of a permanent endowment fund will provide the State Treasurer with the opportunity to make long-term investments, at higher rates of return, with Idaho's tobacco settlement money.
3. Greater return on the long-term investment of money in the permanent endowment fund will result in more money being available for purposes such as tobacco prevention and cessation programs, and for relief to counties for the cost of caring for indigent persons with tobacco-related illnesses.

**Statements AGAINST
The Proposed Amendment**

1. The proposed amendment is unnecessary because an existing law already provides for a fund into which Idaho's tobacco settlement money is deposited, and the amount of the distribution of money from a permanent fund should not be fixed in the Idaho State Constitution.
2. The Idaho State Constitution is a legal blueprint for government in Idaho and a historical document that should not be changed for relatively minor matters, which can best be managed administratively. Changes to the Constitution should be made only for major issues of interest to the entire state or in the event of a constitutional crisis.
3. Protection of the tobacco settlement money from transfer to the General Fund in years of financial difficulty for the purpose of balancing the budget can be addressed through governmental constraint rather than a constitutional amendment.

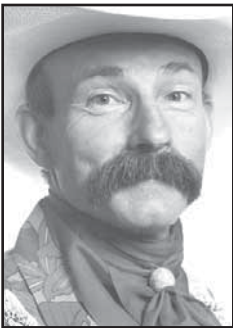
*Published by Ben Ysursa
Secretary of State
State of Idaho*



Commentary

Baxter Black, DVM

On the edge of common sense



Curious cow

This is the story of a curious cow that lived on Mr. Marvin’s farm in the kingdom of Kansas. Her name was Yvonne.

She was of Scottish and English heritage, but Farmer Marv guessed that she had some Native American Pronghorn antelope in her lineage because everyone knows that antelopes are very curious.

Farmer Marv had a great large old-fashioned barn with a second story hay mow, a high-pitched roof and a rooster weather vane on the tallest peak. Yvonne was piddling around the barnyard one fine day doing her hooves, trying to find her cuticles and curling her switch.

“How did that rooster get on top of the barn?” she wondered.

“Well,” said Peggy, her best hen friend, “I supposed he walked. He could not fly because the Poultry Protection League made it illegal for us to fly higher than a chicken wire fence.”

“Hmmm,” said Curious Cow as she wandered into the barn, “Let’s see.” She walked between two old draft horse feed troughs, the milk cow stanchion, the rebuilt tractor and the sacks of protein supplement to a steep set of wooden stairs.

“You can’t go up there!” said friend hen, “because cows can’t hop.”

“I wonder,” mused Yvonne, and she clattered up the steps like a mountain goat!

In the hay mow, she explored the store of baled hay, then walked to the open door. Yvonne had never seen the farm from this high up. It was then that Farmer Marv and son Roger came out the kitchen door. Yvonne saw their mouths make an ‘O’! Yvonne and Peggy watched from a safe distance as the men constructed a long ramp out of plywood, old boards, tar paper and drywall screws. They had to set some hefty support posts in the muddy ground.

“What do you think that is for?” wondered Curious Cow.

“Maybe it’s a ski jump for the Kansas Barnyard Olympics,” suggested Peggy.

Peggy was wrong. It took two men, three 8-foot panels, 30 pieces of baler twine, and a plastic whip to push and shove Yvonne to the door, over the edge and down the slope.

When they tossed friend hen out after her, she was heard to say, “I can fly! I can fly! I can fl...”

And that is the story of Curious Cow, which unlike other fairy tales, is true. I saw the video.

Wayne Cornell

Not important ... *but possibly of interest*



Mom explains appendix’s purpose

When I was a kid, my mother believed in preventative medicine. She constantly offered advice and warnings on dangers I might encounter. One day she would say “Don’t fall in the ditch!” The next day it was “Don’t fall out of a tree!” She seemed convinced that when I woke up in the morning my first thought was, “Today I think I will fall in a ditch or fall out of a tree,” and she was making a last-minute attempt to bring me to my senses.

But the possibility of me drowning or breaking an arm or leg didn’t concern Mom nearly as much as the condition of my appendix.

Any time I admitted to having any kind of pain, Mother immediately suspected my appendix. She would gingerly poke the right side of my abdomen and asked me if it hurt.

The appendicitis test was the first applied, whether the pain was located in my shoulder or my big toe. And if the hurt was in my stomach, I could figure on getting poked every hour on the hour until it disappeared.

Mom’s concern for my appendix stemmed from the fact that she believed that organ (if it is an organ) was Mother Natures’s way of handling indigestible foreign objects entering the body. She first made me aware of the danger I could pose to my appendix when she caught me chewing on a wooden Ticonderoga pencil.

“You better quit eating that pencil!” she warned.

“All those wood splivers will go to your appendix, and when it gets filled up it will break and you’ll have to go to the hospital for an operation! That’s what happened to my cousin Ethel back in Nebraska.”

Being a kid, I took Mom’s analogy at face value. It made sense that there was something inside me to filter out foreign objects. Since my appendix was down there somewhere in the area of my stomach, it seemed to fill the bill nicely.

As time passed, the list of items that could end up in my appendix got longer, as did the list of relatives in Nebraska who were alleged victims. Sunflower seed shells were naturals (second cousin Janice in Wauneta), along with paper spit wads (Uncle Earl in Imperial). According to mother, all wood-like material accidentally or intentionally swallowed would automatically be routed there. Coins of all denominations were exempt, as were watermelon and apple seeds, which could take up residence in the stomach, put down roots and sprout (third cousin Jimmy in Ogalala).

I always pictured my appendix as being sort of a small pink balloon filled with pieces of pencils, spit wads and sunflower seed shells. But there were a couple of points that bothered me.

If Mother’s explanation was correct, was the debris eventually broken down and absorbed, or was I doomed to carry every No. 2 pencil I had ever eaten around with me for the rest of my life?

More importantly, if my appendix did eventually break and was removed, where would future debris go? The prospects were frightening.

Years later, during a college biology lecture, a professor observed that nobody had really pinned down the purpose of the human appendix. At the time, it struck me as pretty stupid that the academic community hadn’t contacted Mother.

Letter to the editor

Sheriff sets record straight on Grand View complaint

Owyhee County Sheriff Gary Aman wrote the following letter to the mayor and city council of Grand View. A copy was sent to The Owyhee Avalanche.

— Ed.

After reading the article in the local newspaper (Oct. 25 Avalanche) quoting the minutes of the City Council meeting and the city employee Bob Servis accusing the Owyhee County Sheriff’s Office of not doing our job, I have gone back and looked into the complaint.

On Jan. 30, 2006, Bob Servis called Dispatch and wanted to talk to a deputy when he came on duty about some signs being vandalized. Deputy Crandall met with Servis that same day and investigated the vandalism.

According to Deputy Crandall’s report, there were five stop signs pushed over and a small amount of paint transfer to one of the signs. The signs were not damaged. Deputy Crandall put the signs back up and notified City Hall of what he did.

I recently talked to Servis about the incident, and he told me that he did not know when it happened and that Deputy Crandall did not take any action and refused to take a report. I questioned Servis about the article quoting him that he reported it on June 29, 2006 to Dispatch and talked to the deputy on June 30, 2006. All calls are recorded automatically, and Servis did not call during the month of June.

Servis then told me he could not remember when it happened and, in fact, Deputy Crandall did take a report. The report was closed — no suspects.

I just want to reassure you that we take all calls of crimes seriously and have no agenda to not give appropriate and timely law enforcement service to the City of Grand View.

I also believe that a retraction in the newspaper is appropriate.

Gary Aman
Owyhee County Sheriff

The Owyhee Avalanche
Owyhee County’s best source for local news!!

Commentary

Election letters to the editor

Steve Nash has understanding to continue on South Board

With the upcoming election for the water board fast approaching, the water users need to take interest in the future of this district. With this in mind, I am writing to endorse Steve Nash for re-election.

Having served on the water board in the past, I know Steve is a good listener when it comes to the concerns of the water users. He contemplates issues, considering what is best for the water district as a whole.

He has attended several state water conferences, and taken it upon himself to be informed on state and local water issues. He has been a keen observer of agendas facing other districts, allowing him a broad understanding of environmental and legal issues. Steve looks toward the future of the irrigation district, thus being prepared to protect our water for future generations. In addition, Steve shares the taxpayers' concerns over the financial stability of our district. He understands the importance of working as a team when serving on a board such as this. He uses common sense in combination with knowledge to find the best solution for all concerned. Steve has never used a personal agenda in his role as a board member.

By re-electing Steve Nash, you can be assured that his integrity will continue to benefit the water users of the districts under the South Board of Control.

David VanWassenhove
Marsing

Nash, Davenport will provide wise leadership for S. Board

This is an open letter to the community served by the Owyhee Irrigation Project:

There has been a relentless effort to fire the manager by a very select few, and this effort continues. It has become very personal and reckless. Issues that are important to our continued viability have been distracted from, and will continue to be, until these attempts are put to an end. I believe that less than 1 percent of the qualified vote has been represented in this effort, all the while costing this community a tremendous amount of money as well as creating division.

Wise leadership sets aside personal vendettas and narrow interest, and instead looks to serve the community. I have watched Steve Nash perform his duties very admirably under very difficult conditions. As a family man, I can't afford reckless leadership, therefore, I will be voting for Steve Nash and Jim Davenport on Nov. 7.

David Shenk
Homedale

Gannon's re-election would give Owyhee voice in ag affairs

With an overwhelming majority of the revenue in our District 23, which includes western Twin Falls and Owyhee counties, being generated by the agricultural and natural resources industries, it is especially advantageous to us to have an Agricultural Committee chairman selected from our district.

During the past 16 years, we have been fortunate in the House of Representatives to have had that chairmanship from either Twin Falls or Owyhee counties.

For the first time, with your help in re-electing Sen. Gannon, an Ag Chair could be selected from the Senate.

Five senate chairmen are not running for re-election, making Tom, who is now vice-chair of the Senate Agricultural Committee, next in line for the chairmanship.

The chairman determines the agenda for the committee that he or she chairs, so to enable Sen. Gannon to go into the leadership position would be a definite plus for District 23.

I hope on Nov. 7 you will remember that you are not only voting for a senator, but with Tom as Senate Agricultural chair you also will have a strong advocate for our district's

agricultural and natural resources industries.

Frances Field
Retiring state representative for District 23A and current House Ag chairman
Grand View

GOP's Donna Jones will help schools' finances as controller

Idaho's constitutional mandate regarding management of state endowment lands is clear. The lands must be managed for the maximum long-term financial return for public schools.

Donna Jones and other Republicans understand this mandate, and that's why I am voting for her to become our next state controller.

This mandate is vitally important to Idaho, especially during tough economic times. Every dollar earned by Land Board lessens the burden on taxpayers.

When I cast my vote on Nov. 7, I'm putting my money on the Republican candidate who understands the Land Board's constitutional responsibility. I will not take my chances with a Democrat, whose party consistently sides with environmental extremists who want to lock up our land at any cost.

Please vote Donna Jones on Nov. 7th.

Joan Mason
Homedale

Nash possesses right qualities to continue as Gem director

I would like to show my support for the re-election of Steve Nash, director, Gem Irrigation District.

Steve is a man of integrity. He has shown a high level of commitment to this position in time and educating himself in proper procedure.

A man of character, humility and intelligence. I cannot think of a better combination in a person to represent us in issues of water rights and water quality.

John Demshar
Homedale

Jim Patrick supports views crucial to Owyhee County interests

Jim Patrick has earned my respect and vote. He is conservative in his beliefs, and right-on on water rights issues: First in time, first in right. Farming for 30 years and his interest in banking gives Jim a background to represent our agricultural interests well.

His commitment to represent Owyhee County is demonstrated by his willingness to meet Owyhee County citizens at Murphy Outpost Days, the Owyhee Cattlemen's summer meeting, candidate forums from Pleasant Valley to Grand View, and the Owyhee County Fair.

Vote for Jim Patrick as District 23A Representative.

Jerry L. Hoagland
Wilson

Davenport's background will be the right fit for District 5

On Nov. 7, the water users of the South Board of Control will have an opportunity to elect Jim Davenport as director for the District 5 area.

Jim bought a farm in Owyhee County in 1983. He farmed and milked dairy cows. In 1986, he went to work riding ditch for the South Board of Control. He took care of the water users on the A Canal, which is the longest ride in the district.

He quit riding ditch in 1995 and developed Idaho Sporting Clays on part of his farm. He presently owns and operates this business.

He was a director for the South Board of Control during 2001-2003.

Jim has the knowledge and the experience to understand the needs of the South Board of Control and the water users. He also knows how to operate a successful business.

Please vote for Jim Davenport on Nov. 7.

Rodger Nash
Homedale

Jim Patrick would be of great service to District 23 voters

I am writing in support of Jim Patrick for Representative for Legislative District 23A. Jim has a conservative rural background, which is a good fit for this area. In addition to agricultural experience, he has a solid business sense, including working in the banking industry.

I believe that the voters of District 23 will be best served if their representatives share similar philosophies on most of the issues. I have worked with Jim Patrick through the years, including some issues this past legislative session. So I am confident we will have a good working relationship.

Please join me in voting for Jim Patrick for Representative in District 23A.

Rep. Bert Brackett (R), District 23B
Flat Creek Ranch
Rogerson

Letters to the editor policy

The Owyhee Avalanche welcomes letters to the editor.

Our policy is that locally written letters receive priority. We do not publish mass-produced letters. The length must be limited to 300 words; the letters must be signed and include the writer's address and a daytime phone number where the writer can be reached for verification.

Letters can be e-mailed to owyheeavalanche@cableone.net or faxed to (208) 337-4867 or mailed to P.O. Box 97, Homedale ID, 83628.

The deadline for submitting letters to the editor is noon on Friday. For more information, call (208) 337-4681.

The Owyhee Avalanche

Looking back...

from the files of The Owyhee Avalanche and Owyhee Chronicle

25 years ago

October 28, 1981

South Board plans November 13 tour

Water users and guests have been invited to tour projects under the jurisdiction of the South Board of Control, Owyhee Irrigation Project.

The bus tour will be Friday November 13, and will begin at the watermaster’s office at 8:30 that morning, according to Clyde Hutton, secretary-manager.

Sites to be toured include the Owyhee Dam hydropower site and the dam itself, the South Canal, the 5.7 lateral hydropower site, the Jump Creek Diversion and the Marsing pumping plant.

Tros end season 9-0

Homedale tuned up for its A-3 state playoff quarterfinal later this week by beating Melba, 48-6, Friday night in the Trojans’ regular-season wind-up.

Now 9-0, the Trojans will try to keep that perfect record intact during the next three weeks of postseason play. The Mustangs closed out the season at 5-4.

Randy Deshazer scored three times in the opening quarter as Homedale opened up a 34-6 halftime bulge and coasted home.

Melba’s only score was a 59-yard scoring pass from quarterback Henrik Fast to Ben Rice. Rice caught three passes for 92 of the Mustangs’ 96 passing yards.

Deshazer rolled up 189 yards in just 16 carries, and Homedale piled up 339 yards on the ground. Bill Maxwell gained 41 and quarterback Steve Nash 36.

Maxwell also scored twice for the Tros on runs of three and two yards, while sophomore Chris Landa scored the final TD for Homedale late in the third quarter.

Homedale’s defense held Melba to just four first downs and limited the Mustangs fine running back, Neil Givens, to only 26 yards in 13 carries.

Homedale locals

Mr. and Mrs. Frank Pierce went to visit Lucy Stutheit’s daughter, Mr. and Mrs. Bud Benoit, Bend; then to Eugene to visit Frank’s brother, Mr. and Mrs. Henry Pierce, and on to Portland to visit his sister and husband, Mr. and Mrs. Walter Stutheit and other relatives on the Oregon coast.

On Sunday Lera and Frank Pierce with daughter, Millie and her sons met Emma Prest at Ontario where they spent some time before going to the Prest home in Fruitland for a visit.

Mr. and Mrs. Ray (Charlotte) Piatt, McCall are parents of a 7 pound 13 ounce daughter, Crystal Elaine, born on October 17. Fred and Edith Lawrence, Homedale, are the grandparents.

Mary Stutheit returned to her home in Homedale last Friday following surgery at Caldwell Memorial Hospital.

Bessie Johnson was taken to Boise by her daughter-in-law, Barbara Johnson, to spend the weekend visiting relatives.

Tussock Moth infests fir trees in Owyhee County

Infestation of the Tussock Moth in Owyhee County forest lands was verified Monday by Oscar Anderson, Boise office of the Bureau of Land Management.

Following an inquiry by this newspaper, Anderson said he had checked with the forestry department and they are aware of the problem, but that the moth infestation is spotty in white fir stands in the Owyhees making it difficult to control at this time.

This newspaper requested the information regarding a particular stand of fir southeast of Silver City, near the head of Jordan Creek earlier this fall.

Anderson said similar infestations are affecting timber west of Florida Mountain, and other locations. The infestation generally begins at the top of a drainage, working its way down, he said.

Spraying is legal, and has been considered, but public sentiment has been against this action, Anderson said.

50 years ago

November 1, 1956

Burglars steal cutting torch here for use in break-in

The welding and cutting torch used in the burglary of the Wilder bank late Saturday night or early Sunday morning was identified by Earl Breach of the Idaho Brake as the one stolen from his garage late Saturday night.

Loss of the missing torch and a 10-ton jack taken off the wheel liner and valued at \$100, was discovered Sunday morning before the news of the bank robbery was known, according to Mr. Breach.

The burglars apparently were unable to raise a window to enter the garage, and cut open an entrance in the sheet metal building about two yards square and made off with the equipment.

An estimated \$2,700 was taken from the bank, according to O. W. Thornock, assistant manager, who said the burglary was apparently the work of two or three men, who broke in by prying open the side door and cutting into the vault with a blow torch. Thornock said the loot must have weighed over 300 pounds. The loss was limited to cans and wrappers of silver, after they were unable open the safe.

The burglary was discovered in the midmorning by Glenn Osborn, Wilder marshal, and reported to the Canyon County Sheriff’s Office.

Trojans grind out grudging 12-2 win over Notus

The Homedale Trojans used two lightning touchdown thrusts and a stiff defense to grind out a 12-2 victory over previously unbeaten Notus here Friday afternoon and take over undisputed possession of first place in the Snake River Valley “B” league.

Both teams had entered the contest undefeated and untied, with Homedale now ruling as a strong favorite to win the league championship.

Notus jumped to a 2-0 lead in the first quarter when tackle Ron Javaux nailed a Homedale back in the end zone. It stayed that way until midway through the third quarter when Homedale struck for the first time.

Chuck Dunn fired a 10-yard pass to Vic Landa, who pulled it in on the midfield stripe and scampered the remaining 50 yards to the touchdown. The Trojans stopped a long Notus drive at the one-yard line early in the fourth quarter and roared back for the clinching touchdown. Bill Carson got off a pair of 40-yard gallops in the 99-yard drive and finally capped it by slanting over from five yards out.

Homedale’s tough defense stopped Notus five times within the 10-yard line in the well-played game, while a Notus fumble at Homedale’s three-yard stripe halted another TD drive.

Final plans made for ‘open house’ at armory Nov. 9

Final plans for the “open house” at the new Owyhee County armory in connection with the Homedale High School homecoming on Friday, November 9 were announced this week by Lt. Frank Matteson, commanding officer of the local guard unit, the 616th Transportation unit (Lt. Truck).

No formal dedication of the armory will be made now, Lt. Matteson said. This will be made next January when legislators are in Boise for the legislative session.

The day’s program will include:

1:30 — Homecoming parade, led by the Army color guard, in which the high school band will play. School floats and Army vehicles, equipment and personnel will be entered. It will start at the old armory on west Idaho Avenue and proceed through town to the high school. The homecoming queen and her attendants will participate.

2:30 — Homecoming football game.

4:30 — Open house at armory, beginning at 4:30 p.m. until 8:30 p.m. Coffee and refreshments.

8:00 — Military band concert featuring the 25th Army band of 35 pieces. Bill Rankin, leader.

9:30 — Homecoming and open house dance, co-sponsored by the high school and the National Guard until. An 18-piece military dance band will furnish the music and entertainment.

140 years ago

October 27, 1866

THE CURRENCY QUESTION. Next Thursday, November 1st, is the day upon which the new rates of gold dust and other currency are to go into practical effect. As far as we can judge the situation, the signers of the document are determined to carry out their pledge to the letter, a consummation most devoutly to be wished. The most important feature of the matter is the reduction of the price of Boise dust \$4 on the ounce – it will tend materially to stop its importation, which accomplished, it is well known that all the Jordan Creek dust extracted ere next season can be inserted in a pig’s pepper, and thus the necessity for a sharper lookout in financial transactions. A strict adherence to the resolutions referred to must have a very salutary effect, but we insist on our old opinion that the mercantile atmosphere will never be truly healthful here until all species of gold dust is driven out of use as currency.

FIGHTING. For frequency, Owyhee can safely boast of standing peerless in this business. One merit of nearly all is their harmlessness. We had the foundation of a splendid item in this line, but Al. Cage says he was right by during the war of gestures, words and one blow, and that the winner being a young man and his first engagement, he thought he would get a copy-right for the report as he obtained it. Upon inquiry why he attached to this battle so much importance, we were informed that the victor was a rising, promising and ambitious youth, who might one day reach Presidential honors be reason of his fighting fame — that quality being now the highest recommendation for popular promotion — and in such an event he expects to make a fortune out of a verbatim and truly illustrated report of the science and genius displayed on this occasion; and therefore he forbade any direct allusion to the affray. These fights are lively entertainments. They bring the “rats” from their holes and give our streets an animated appearance. Another advantage in them is that for the time being actors and spectators forget the recent failure and most all their troubles. The science displayed in blacking a fellow-being’s eyes, or kicking in his ribs, and the genius required to call him a variety of names, form subjects of admiration and colloquial indulgence which buoys up the soul while depressed from a lack of funds, or beans and bacon.

NEW ROAD. Andy Loucks is superintending the building of a wagon road on the east side of Jordan Creek from the Cosmos Mill to Wade’s Gulch — distance about three-fourths of a mile. The funds are contributed by the Cosmos Co. and Messrs. Loucks, Tregaskis and Clifton. Excepting a few rods little or no blasting will be required and about fifteen men have been employed along the line for over a week. The object is to have a road that can be traveled during the winter and be dry early in the spring which experience has shown cannot be attained on the west side of the creek. With the usual fall of snow this road can be kept open with very little labor.

HILL BEACHEY says the Commanding Officer of this Military Department has verbally promised his troops for the protection of the R. R. Stage Line at points subject to Indian visitations between the Owyhee and Humboldt rivers. The Department can spare a company for that special purpose and they should go at once. Nothing could be more satisfactory to this people than the thorough protection of overland communication to Nevada, California, &c. The importance of it is being felt through all South-Idaho. The result of the Jennings campaign undoubtedly had a most salutary effect on the savage this season, as the regularity of Beachey’s stages testifies. The chastening and chasing demonstrated to Mr. Lo that the Owyhees are on it semi-occasionally. But it is about time for the romantic cuss to show a fall hand again and those whose business is to fight this tiger should be on the lookout.

Public notices

OWYHEE COUNTY COMMISSIONERS MINUTES OCTOBER 16TH 2006 OWYHEE COUNTY COURTHOUSE MURPHY, IDAHO

Present were Commissioner’s Tolmie and Salove, Clerk Sherburn, Treasurer Richards, Assessor Endicott, Prosecutor Faulks, Fred Grant and Jim Desmond.

The Board amended the agenda to include the following items: Cancellation of market value and cancellation of taxes, appealing of Conditional Use Permit.

Roger Batt met with the Board concerning Ag Tour 2007; a request was made to help with funding. No action was taken.

The Board approved cancellation of property value Parcel No. MH 01N03W213600A.

The Board approved cancellation of market value on Parcel No. RP B00000030603A.

The Board called for an executive session at 10:00 a.m. on a personnel matter.

The Owyhee Employees Association met in executive session at 10:45. The Board moved to set a grievance hearing at 10:00 a.m. on October 23rd.

The Board set a hearing on a CUP appeal for Paul Hudson for November 27th at 1:00 p.m. James B. Desmond will be the hearing officer.

The Board took the following action on Indigent and Charity cases presented:

06-50 a lien was approved. 06-51 a lien was approved. 06-53 a lien was approved. 06-51 the applicant was approved. 06-45 denied, not medically indigent.

06-48 denied, not the last resource. 06-49 denied, not the last resource.

The Board approved payment of all outstanding bills to be paid from the following funds:

Current Expense \$109,165 Road & Bridge \$55,632, District Court \$2,197 Fair Grounds & Bldg. \$1,106 Probation \$967, Historical Society & Museum \$960, Indigent & Charity \$12,995, Revaluation \$248, Solid Waste \$16,940, Tort \$38,821, Weed \$1,406, 911 \$871.

The Board approved the minutes.

The complete minutes can be viewed in the Clerk’s office.

/s/Harold Tolmie Attest: /s/Charlotte Sherburn 11/1/06

PUBLIC NOTICE OF GENERAL ELECTION

Owyhee County General Election will be held Tuesday, November 7, 2006 from 8:00 am to 8:00 pm at the following precinct polling places:

01 North Homedale – Senior Citizens Center, 224 W. Idaho Avenue Homedale

02 South Homedale–Magistrate Court Building, 31 W. Wyoming Avenue Homedale

03 North Marsing – Marsing Community Center 126 2nd St. N. Marsing

04 South Marsing – Extension Office, 238 W. 8th Ave. Marsing

05 Pleasant Valley – Mail Ballot

06 Wilson – Wilson Fire Station, 10427 Johnston Lane, Wilson

07 Murphy – Courthouse, 20381 State Hwy 78 Murphy

08 Oreana – Community Hall, 18092 Oreana Loop Road

SAMPLE PROPOSITION BALLOT

OWYHEE COUNTY, IDAHO

GENERAL ELECTION–NOVEMBER 7, 2006

INSTRUCTIONS TO VOTER: To vote on the following, mark a cross (X) in the square at the right of “Yes” or “No”.

PROPOSITION ONE	PROPOSITION TWO
<p>AN INITIATIVE INCREASING K-12 EDUCATION FUNDING FOR LOCAL PUBLIC SCHOOLS BY ADDING ONE PERCENT TO STATE SALES TAX.</p> <p>An initiative relating to K-12 public school funding; identifying the purpose of this initiative as providing adequate and stable funding for local K-12 public schools; adding one percent (1%) sales tax rate, effective July 1, 2007, or requiring legislature to develop alternative revenue stream for this component of K-12 local public schools funding, creating the Idaho Local Public Schools Investment Fund which, along with other revenue sources, will be used exclusively for K-12 public education, and which must be used for supporting students in the classroom and improving local schools; requiring annual accountability reports from local school boards on use of increased revenues; requiring that increased revenues in the Idaho Local Public Schools Investment Fund augment, not replace, current K-12 public school support revenue; establishing the method to compute each year's general fund appropriation for public schools; providing for distribution of increased revenues through the current K-12 public school funding mechanism; requiring advisory revote on Act in year 2020; and containing a severability clause.</p> <p>YES <input type="checkbox"/></p> <p>NO <input type="checkbox"/></p> <p>What your vote will do: A YES vote would direct the legislature to increase state funding for public schools. A NO vote would make no change in school funding.</p>	<p>AN INITIATIVE LIMITING EMINENT DOMAIN WHEN USED FOR ECONOMIC DEVELOPMENT; DEFINING LAND USE LAW; AND PERMITTING JUST COMPENSATION FOR REGULATORY TAKINGS.</p> <p>An initiative relating to eminent domain; amending section 7-701, Idaho Code, to provide limitations on eminent domain for private parties, and for urban renewal or economic development purposes; and provide for further judicial review of proceedings involving the exercise of eminent domain; adding a new section 7-701A to provide for definitions relating to highest and best use, fair market value, just compensation, and land use law; and amending Chapter 80, Title 67, Idaho Code, to provide for just compensation when a regulatory action reduces fair market value of property and to provide just compensation to a condemnee.</p> <p>YES <input type="checkbox"/></p> <p>NO <input type="checkbox"/></p> <p>Shall the above-entitled measure proposed by Proposition Two be approved?</p> <p>What your vote will do: A YES vote would expand the definition of eminent domain and provide further limitations on its use. A NO vote would make no changes to the current definition and use of eminent domain.</p>

NOTICE OF BUDGET HEARING PROPOSED BUDGET, FISCAL YEAR 2006-2007 OPALINE IRRIGATION DISTRICT

FISCAL YEAR NOVEMBER 1, 2006 TO OCTOBER 31, 2007

Notice is hereby given that the Directors for the Opaline Irrigation District will meet November 7, 2006 at 8 p.m. for a budget hearing pursuant to Idaho Code 42-3229 At Elias Jaca’s Farm; take Jaca Road South ¼ mile, then West ¼ mile. The proposed Budget may be examined at the home office of the Secretary, Cynthia Eaton, 8004 Birmingham Road, phone 896-5273.

The following is a copy of the proposed budget, including expenditures for the first 10 months of the 2005-2006 fiscal year:

EXPENSES:	BUDGETED	EXPENSES	PROPOSED
ITEM			
Bond Pymt.	\$ 7,200.00	\$ 7,883.50	\$ 8,000.00
Insurance	\$ 2,500.00	\$ 1,786.00	\$ 2,000.00
L&P Fees	\$ 2,700.00	\$ 1,703.00	\$ 2,700.00
Maint.	\$ 22,900.00	\$ 21,243.34	\$ 72,900.00
Office	\$ 1,000.00	\$ 141.26	\$ 1,000.00
Phone	\$ 800.00	\$ 634.05	\$ 1,600.00
Power	\$123,150.00	\$ 78,393.66	\$123,150.00
Misc.	\$ 250.00	\$ 0.00	\$ 250.00
Soc. Sec.	\$ 2,500.00	\$ 2,196.77	\$ 3,000.00
Wages	\$ 14,500.00	\$ 12,677.37	\$ 20,000.00
TOTAL	\$177,500.00	\$126,658.95	\$234,600.00
INCOME:	PROJECTED	INCOME	ANTICIPATED
ITEM			
2005 – O&M	\$177,500.00	\$172,240.00	\$ 5,260.00
Late Fees	5,000.00	4,497.00	736.40
2006 – O&M	-----	-----	\$182,500.00
Invest. Fund Contrib.	-----	-----	\$ 41,603.60
Interest	1,500.00	1,359.80	1,500.00
Power Refund	3,000.00	3,125.00	3,000.00
TOTAL	\$187,000.00	181,221.80	\$234,600.00

Cynthia Eaton Secretary-Treasurer Opaline Irrigation District P.O. Box 331 Marsing, ID 83639 11/1/06

Oreana 09 Grandview – Eastern Owyhee Library, 520 Boise Ave GrandView 10 Bruneau – American Legion Building 32536 Belle Ave. Bruneau 11 Riddle – Mail Ballot 12 Three Creek – Mail Ballot 13 Absentee - Courthouse 20381 State Hwy 78 Murphy 10/25;11/1/06

NOTICE OF NON-ELECTION

Notice is hereby given that: No election will be held in the Owyhee Pioneer Cemetery District on November 7th, 2006. Only one (1) Candidate has filed for the office of Commissioner for

Sub-district No. 3. Joan Bachman, Secretary 11/1/06

NOTICE MARSING-HOMEDALE CEMETERY MAINTENANCE DISTRICT MARSING, OWYHEE COUNTY, IDAHO

Notice is hereby given, no election will be held on November 7th, 2006. A single nomination was submitted for commissioner of Subdistrict No. 3 Opaline District, therefore, no election is required. Date this October 25th, 2006 10/25;11/1/06

SAMPLE BALLOT OWYHEE COUNTY, IDAHO

GENERAL ELECTION NOVEMBER 7, 2006

Vote for such candidate as you desire by placing an X in the small square at the right of the names, or by writing in the names of the persons you desire to vote for, and place an X in the square at the right of their name.

CANDIDATES FOR UNITED STATES OFFICES	CANDIDATES FOR LEGISLATIVE DISTRICT OFFICES
FOR REPRESENTATIVE IN CONGRESS First District (Vote for One)	Legislative District No. 23 FOR STATE SENATOR (Vote for One)
LARRY GRANT (Democratic) <input type="checkbox"/>	BILL CHISHOLM (Democratic) <input type="checkbox"/>
ANDY HEDDEN-NICELY (United Party) <input type="checkbox"/>	TOM GANNON (Republican) <input type="checkbox"/>
DAVE OLSON (Independent) <input type="checkbox"/>	(Write-in)..... <input type="checkbox"/>
BILL SALI (Republican) <input type="checkbox"/>	Legislative District No. 23 FOR STATE REPRESENTATIVE Position A (Vote for One)
PAUL SMITH (Constitution) <input type="checkbox"/>	JIM PATRICK (Republican) <input type="checkbox"/>
(Write-in)..... <input type="checkbox"/>	PETER RICKARDS (Democratic) <input type="checkbox"/>
CANDIDATES FOR STATE OFFICES	(Write-in)..... <input type="checkbox"/>
FOR GOVERNOR (Vote for One)	Legislative District No. 23 FOR STATE REPRESENTATIVE Position B (Vote for One)
JERRY M. BRADY (Democratic) <input type="checkbox"/>	BERT BRACKETT (Republican) <input type="checkbox"/>
TED DUNLAP (Libertarian) <input type="checkbox"/>	(Write-in)..... <input type="checkbox"/>
C.L. "Butch" OTTER (Republican) <input type="checkbox"/>	CANDIDATES FOR COUNTY OFFICES
MARVIN RICHARDSON (Constitution) <input type="checkbox"/>	FOR COUNTY COMMISSIONER First District (Vote for One)
(Write-in)..... <input type="checkbox"/>	JERRY HOAGLAND (Republican) <input type="checkbox"/>
FOR LIEUTENANT GOVERNOR (Vote for One)	(Write-in)..... <input type="checkbox"/>
LARRY LaROCCO (Democratic) <input type="checkbox"/>	FOR COUNTY COMMISSIONER Third District (Vote for One)
JIM RISCH (Republican) <input type="checkbox"/>	DICK FREUND (Republican) <input type="checkbox"/>
WILLIAM CHARLES WELLISCH (Constitution) <input type="checkbox"/>	(Write-in)..... <input type="checkbox"/>
(Write-in)..... <input type="checkbox"/>	FOR CLERK OF THE DISTRICT COURT (Vote for One)
FOR SECRETARY OF STATE (Vote for One)	CHARLOTTE SHERBURN (Republican) <input type="checkbox"/>
BEN YSURSA (Republican) <input type="checkbox"/>	(Write-in)..... <input type="checkbox"/>
(Write-in)..... <input type="checkbox"/>	FOR COUNTY TREASURER (Vote for One)
FOR STATE CONTROLLER (Vote for One)	BRENDA RICHARDS (Republican) <input type="checkbox"/>
DONNA M. JONES (Republican) <input type="checkbox"/>	(Write-in)..... <input type="checkbox"/>
JACKIE GROVES TWILEGAR (Democratic) <input type="checkbox"/>	FOR COUNTY ASSESSOR (Vote for One)
(Write-in)..... <input type="checkbox"/>	BRETT ENDICOTT (Republican) <input type="checkbox"/>
FOR STATE TREASURER (Vote for One)	(Write-in)..... <input type="checkbox"/>
RON G. CRANE (Republican) <input type="checkbox"/>	FOR COUNTY CORONER (Vote for One)
HOWARD C. FAUX (Democratic) <input type="checkbox"/>	HARVEY GRIMME (Republican) <input type="checkbox"/>
(Write-in)..... <input type="checkbox"/>	(Write-in)..... <input type="checkbox"/>
FOR ATTORNEY GENERAL (Vote for One)	
ROBERT A. "Bob" WALLACE (Democratic) <input type="checkbox"/>	
LAWRENCE G. WARDEN (Republican) <input type="checkbox"/>	
(Write-in)..... <input type="checkbox"/>	
FOR SUPERINTENDENT OF PUBLIC INSTRUCTION (Vote for One)	
JANA L. JONES (Democratic) <input type="checkbox"/>	
TOM LUNA (Republican) <input type="checkbox"/>	
(Write-in)..... <input type="checkbox"/>	

Public notices

NOTICE OF PUBLIC HEARING

The City of Marsing Planning & Zoning will hold a public hearing on November 6, 2006 at 7:00 pm. at Marsing City Hall located at 425 Main St., Marsing, ID. The purpose of the public hearing is to hear testimony regarding building Storage Units in the old railroad turn-around along Bruneau Highway and extends a ways down towards Wye St. A parcel of land situated in portions of Government Lot 2 & 3 in Section 3, Township 2 North, Range 4 West, Boise Meridian, City of Marsing, Owyhee County, Idaho.

Commencing the northwest corner of said Section 3, thence S 89° 40'24" E, 2426.44 feet along the northerly boundary of the said Section 3 which bears N89° 40'24" W 213.67 feet to the northeast corner of the northwest corner of said Section 3: thence 101.64 feet along a curve deflecting to the right having a radius of 523.70 feet, a central angle of 11° 07'11", a chord bearing of S09°27'58"E, and a long chord of 101.48 feet and to the REAL POINT OF BEGINNING:
Thence S89°40'24"E, 202.27 feet;
Thence S33°10'06"E, 466.46 feet;
Thence S56°49'54"W, 208.14;
Thence 301.91 feet along a curve deflecting to the right having a radius of 523.70 feet, a central angle of 33° 01'50", a chord bearing of N86°50'8"E, and a long chord of 297.75 feet;

Thence N33°10'06"W, 164.97 feet

Thence 374.02 feet along a curve deflecting to the left having a radius of 523.70 feet, a central angle of 40° 55'12", a chord bearing of N16° 33'15"E, and a long chord of 366.12 feet and to the REAL POINT OF BEGINNING.
The above described parcel contains 4.2 acres, more or less. Subject to easements and rights-of-way of record or apparent. If you have questions about the property location, there is a map at Marsing City Hall, 425 Main St. 11/01/06

NOTICE OF PUBLIC HEARING

Please be advised that a public hearing will be held before the City of Homedale, Mayor and Council on Nov. 20, 2006 at 6:00 pm at Homedale City Hall, 31 West Wyoming Ave., Homedale, ID. The subject matter of the public hearing will be:
1. Vacation of Public Right of Way filed by Paul Zatica on behalf of Paul's Market. The platted alley runs North/South between East Colorado Ave and East Wyoming Ave.
2. Application for Special Use Permit filed by Michael Munster to conduct the business of a tattoo shop at 20 W Idaho Ave.
3. The increase of irrigation rates for the 2006/07 billing year.
The public is invited to attend and offer input.
Alice E Pegram, City Clerk
City of Homedale
11/1,8/06

SAMPLE

NONPARTISAN JUDICIAL BALLOT

OWYHEE COUNTY, IDAHO

NOVEMBER 7, 2006

INSTRUCTIONS: TO VOTE FOR OR AGAINST THE RETENTION OF THE MAGISTRATE
IN OFFICE, PLACE AN X IN THE SQUARE INDICATING "YES" OR "NO."

"Shall Magistrate Thomas J. Ryan of Owyhee County of the
Third Judicial District be retained in Office?"

YES ☐
NO ☐

NOTICE OF INTENT TO APPROVE A DRAFT HAZARDOUS WASTE POST-CLOSURE PERMIT FOR U.S. ECOLOGY SITE A [Docket # 10HW-0605]

Notice Issued: November 1, 2006
What is the purpose of this notice? The Department of Environmental Quality (DEQ) is proposing to issue a Hazardous Waste Treatment, Storage, and Disposal Facility Post-Closure Permit for the U.S. Ecology Idaho (USEI) Site A Facility. The draft permit is based on the Part B Permit Application submitted by USEI. Permits are not unilaterally approved by DEQ. Before approval, you (the public), and the applicant are provided an opportunity to comment on the draft permit.
What is Proposed? The original Part B Closure, Post-Closure Care, Corrective Action Management Unit Permit was issued to Envirosafe Services of Idaho (ESII) in 1995. Several former solid waste management units at the Site A Facility were capped and closed in 1997, in accordance with HWMA/RCRA regulations. The draft Post-Closure Permit addresses groundwater monitoring, inspection, and maintenance procedures of regulated units at Site A. The draft Permit is hereby proposed for approval.
Facility Description: USEI Site A is located approximately 18 miles south of Bruneau, Idaho.

The closed facility is surrounded by a locked, chain link fence.
Where can I get more information? In person: The draft Permit, fact sheet, and Administrative Record for the facility may be reviewed at the Idaho DEQ Central Office located at 1410 North Hilton, in Boise, Idaho. Online: A copy of the fact sheet and the draft permit is available on-line, via the DEQ web site (www.deq.idaho.gov). By phone: Call Jenny Shafer at (208) 373-0523. Persons wanting to be added or removed from the facility mailing list should contact Rene Anderson at (208) 373-0210.
When are written comments due? 5 p.m. on December 18, 2006. Comments should be addressed to Pete Johansen, c/o Jenny Shafer, Idaho Department of Environmental Quality, 1410 N. Hilton, Boise, ID 83706.
Contact Name: Pete Johansen
Phone: (208) 373-0502 Fax: (208) 373-0154 E-mail: webmastr@deq.idaho.gov
Who will be responsible for implementing this plan? U.S. Ecology Idaho, Inc.
Who is the issuing office? Idaho Department of Environmental Quality, 1410 North Hilton Boise, Idaho 83706
What are DEQ's responsibilities? DEQ is the regulatory agency that helps protect and enhance Idaho's water and air quality, and helps ensure proper management and disposal of hazardous and solid wastes. One way DEQ does this is by requiring permits and plans for regulated activities.
What legal requirements apply? Idaho's rules require that DEQ provide an owner or operator and the public, through a newspaper notice, the opportunity to submit written comments on the draft permit modifications.
What happens next? The DEQ will consider any comments and/or requests for a hearing on the proposed Permit, and will either announce a time and place for a hearing, modify the draft Permit, or approve the Permit as proposed 11/1/06

NOTICE IS HEREBY GIVEN That the undersigned has been appointed personal representative of the above entitled estate. All persons having claims against the said deceased are required to present their claims within four (4) months after the date of the first publication of this notice or said claims will be forever barred. Claims must either be presented to ROBERT D. CARTER, the personal representative of the estate, or the office of Wiebe & Fouser, P.A., Attorneys at Law, 702 W. Chicago, P.O. Box 606, Caldwell, Idaho, 83606-0606, this being the place fixed for the transaction of the business of said estate, or filed with the Court.
Dated this 18th day of October, 2006
/s/Robert D. Carter
Personal Representative
4302 W. Pershall
Marsing, Idaho 83639
11/1,8,15/06

CORRECTION OF NOTICE

On November 15, 2006 beginning at 10:00AM the Owyhee County Planning and Zoning Commission will hear testimony in Courtroom #2, Owyhee County Courthouse in Murphy, Idaho on the following matters at the times listed below. When hearings are finished the commission will take up administrative matters
10:00 - E & T LLC has filed an application for a conditional use permit to subdivide a 40 acre parcel into 19 residential lots approximately 2 acres in size. The property is currently owned by Mary Lootens. Subject property is located north of Marsing in a Multi-Use Zone off of Edison Road and Thompson Road in Section 28, Township 3 North, Range 4 West, Boise Meridian, Owyhee County, Idaho
2:00 ALAN LINDNER has filed an application for a conditional use permit to subdivide a 43 acre parcel into 15 residential lots 3 acres in size. Subject property is located south of Marsing in a Residential Zone off of Highway 78 in Section 26, Township 2 North, Range 4 West, Boise Meridian, Owyhee County, Idaho
4:00 JESS VAN HALL has filed an application for a conditional use permit to subdivide a 37 acre parcel into 22 residential lots ranging in size from 1 acre to 2 acres. Subject property is located south of Marsing in a Residential Zone off Old Bruneau Highway and Hidden Valley Road in Section 23 & 26, Township 2 North, Range 4 West, Boise Meridian, Owyhee County, Idaho 11/1/06



And get results from
your advertising.

- 81% of adults read a community newspaper at least once a week.*
- 50% of adults rely on the local newspaper as their primary news source.*
- Only 16% watch television for community information.*

How will you reach your target audience?

The Owyhee Avalanche
337-4681

* - Survey conducted by the National Newspaper Association and the Center for Advanced Social Research at the Missouri School of Journalism at the University of Missouri-Columbia. Researchers surveyed adults 18 years old and up in markets with fewer than 100,000 residents.



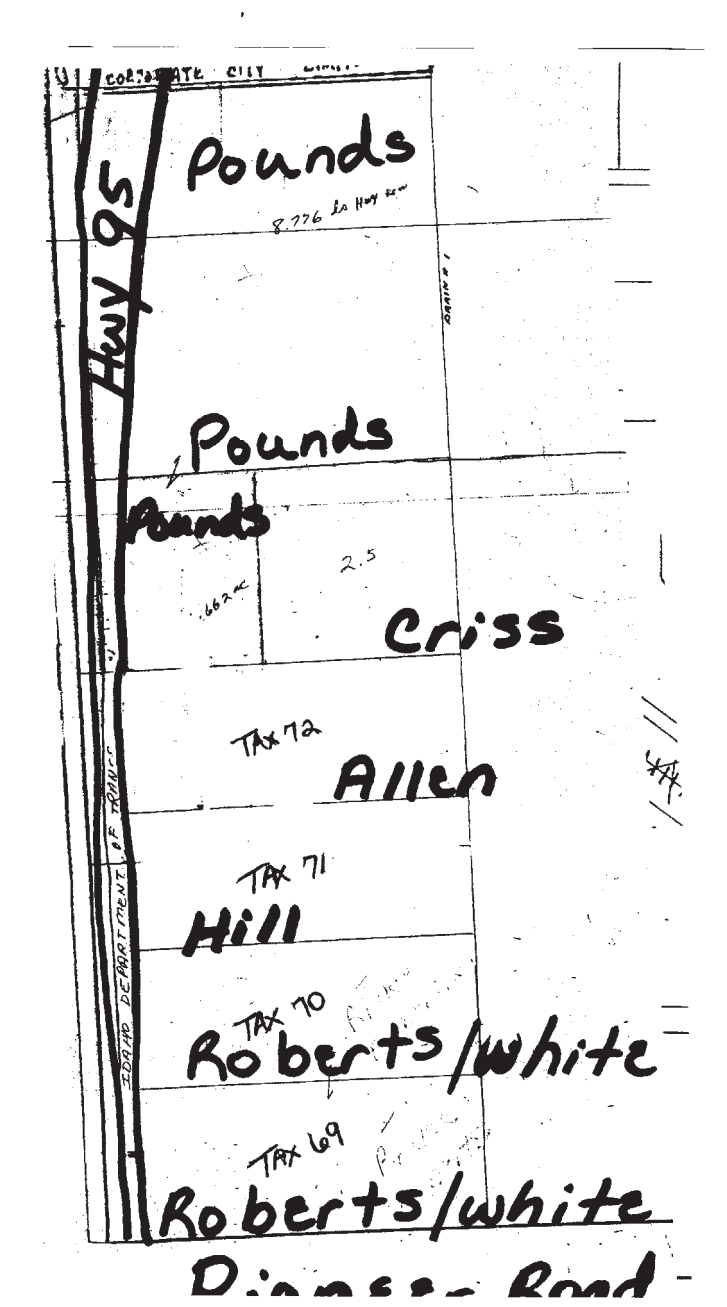
How much should I save for retirement?



Dave's got the answers
to financial riddles
each week in the

The Owyhee Avalanche

Public notices



NOTICE OF PUBLIC HEARING

Please be advised that a public hearing will be held before the Planning and Zoning Commission of the City of Homedale on the 6th day of November, 2006, at 7:00 p.m. at Homedale City Hall, 31 West Wyoming, Homedale, Idaho.

The subject matter of this hearing is the annexation of certain lands into the city limits of Homedale and zoning as follows:

Property Description	Owner
Tax 69	Bryce Roberts / Taryn White
Tax 70	Bryce Roberts / Taryn White
Tax 71	Cecil & Evelyn Hill
Tax 72	Bob Allen
See attached map	Pounds Farms, LLC
See attached map	Randy & Christina Criss

The public is invited to attend and offer input.
Sylvia L. Bahem, Administrator
Planning & Zoning Commission
City of Homedale
10/25;11/1/06

NOTICE

On December 6, 2006 beginning at 10:00AM the Owyhee County Planning and Zoning Commission will hear testimony in Courtroom #2, Owyhee County Courthouse in Murphy, Idaho on the following matters at the times listed below. When hearings are finished the commission will take up administrative matters:

10 AM RICK AND LINDA POLLARD have filed an application for a conditional use permit to establish residential use on a 9 acre parcel. Subject parcel is located in an Agricultural Zone west of Oreana off of Oreana Loop Road and Bates Creek Road in Section 23, Township 4 South, Range 1 West, Boise Meridian, Owyhee County

11 AM BRS NORTHWEST LLC has filed an application for a conditional use permit to establish a gravel extraction

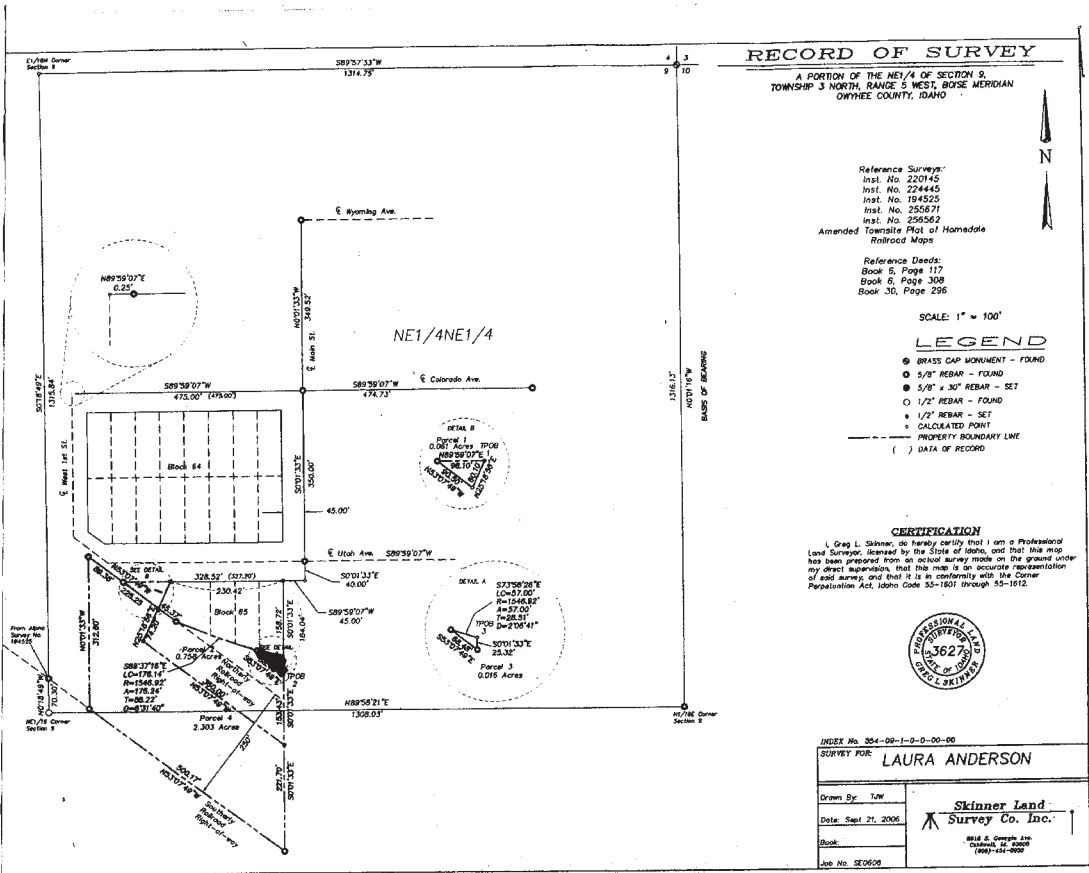
operation. Subject property is located partially in an Agricultural Zone and partially in a Multi Use Zone southwest of Homedale off of Pioneer Road in Section 7, 8, and 18, Township 3 North, Range 5 West, Boise Meridian, Owyhee County

2 PM GARY TRACY has filed an application for a conditional use permit to subdivide approximately 6.69 acres into 6 lots, ranging in size from 1.15 to 1.47 acres. Subject property is located in an Agricultural Zone southwest of Marsing off of Pasco Road in Section 17 Township 2 North, Range 4 West, Boise Meridian, Owyhee County

Information regarding these applications can be obtained by calling the Owyhee County Planning and Zoning at (208)495-2095

11/1/06

Read all about it
in the Avalanche!



NOTICE OF PUBLIC HEARING

Please be advised that a public hearing will be held before the Planning and Zoning Commission of the City of Homedale on the 6th day of November, 2006, at 7:00 p.m. at Homedale City Hall, 31 West Wyoming, Homedale, Idaho.

The subject matter of this hearing is the transfer of "unowned" land from the City of Homedale to Rafter 4 Feed as per the attached map.

The public is invited to attend and offer input.
Sylvia L. Bahem, Administrator
Planning & Zoning Commission
City of Homedale
10/25;11/1/06

A
dog-gone
good deal ...



A subscription to this newspaper provides the reader with all kinds of value:

Local news and photo coverage, historical items, commentaries, special sections, legal notices of all public entities within the county plus water filings in Owyhee County, commissioners' minutes ... the list goes on and on.

Give us a call, and we'll start your subscription with the next issue! If you're not pleased during the first month, we'll give you a full refund!

SUBSCRIPTION RATES:

Owyhee County.....	\$31.50
Canyon, Ada and Malheur Counties.....	\$36.75
Elsewhere	\$40.00

Idaho Sales Tax included

NAME _____

ADDRESS _____

CITY _____

STATE _____ ZIP _____

The Owyhee Avalanche

P.O. BOX 97 • HOMEDALE , ID 83628

<div>Owyhee County Church Directory</div>			<div><div>Knight Community Church Grand View</div><div>Pastor Paul H. Ryan • 834-2639 Sunday School 9:30 a.m. Worship Service 10:45 a.m. Adult Bible Study: Wednesday, 7 p.m. Knight's Neighborhood: (Youth Activity Group) Friday 5-6:30 pm</div></div>
<div><div>Assembly of God Church Homedale</div><div>15 West Montana, 337-4458 Pastor George Greenwood Sunday School 9:30am Sunday Morning Worship 10:30am Sunday Evening Service 6:00pm Wed. Bible Study 7:00pm</div></div>	<div><div>Crossroads Assembly of God Wilder</div><div>Hwy 19 & 95, 482-7644 Sunday School 10am Sunday Morning Worship 11am Sunday Evening Worship 6pm Wed. Bible Study 7pm</div></div>	<div><div>Our Lady of the Valley Catholic Church</div><div>1122 W. Linden St., Caldwell 459-3653 Mass: Saturday 5:00 pm Sunday 9:30 am Spanish Mass: Saturday 7:00 pm Spanish Mass: Sunday Noon</div></div>	
<div><div>Mt. Calvary Lutheran Homedale</div><div>337-4248 or 454-1528 SE corner Idaho and West 7th Sunday School: 9:00 to 9:45 am Services: 10:00 am Wednesday Night Adult Bible Study: 7 to 8:30 pm</div></div>	<div><div>Friends Community Church Wilder - Homedale</div><div>17434 Hwy 95, 337-3464 Pastor: John Beck Worship Services: 10:45 am Sundays Sunday School: 9:30 am Wednesday Prayer Meeting 6:30 pm CLC - Wednesdays at 3:15</div></div>	<div><div>Church of Jesus Christ of Latter Day Saints Homedale</div><div>708 West Idaho Ave 337-4112 Bishop Alan McRae Bishop Dwayne Fisher Sunday 1st Ward 9am Sunday 2nd Ward 12:30pm</div></div>	
<div><div>Homedale Baptist Church Homedale</div><div>212 S. 1st W. Sunday School 10am & 11am Sunday Evening 7pm Wednesday Evening 7pm Pastor James Huls</div></div>	<div><div>Wilder Church of God Wilder</div><div>205 A St. E, 482-7839 Pastor Ray Gerthung Sunday School 9:45am Sunday Service 11am Sunday Eve. 6:00pm Wed. Eve. 7:00pm</div><div></div></div>	<div><div>Mountain View Church of the Nazarene</div><div>26515 Ustick Road, Wilder 337-3151 Sunday School 9:30 Worship 10:30 Adult & Youth Bible Class: Wednesday 7:00 pm Bible Based Recovery: Friday 7:00 pm</div></div>	
<div><div> MARISING APOSTOLIC ASSEMBLY Asamblea Apostolica de Marsing</div><div>221 W. Main • Marsing, Idaho Pastor Ricardo Rodriguez 896-5552 or 371-3516 Sunday School 1:30 pm • Sunday Service 3 pm Thursday Service 7 pm • (Bilingual Services/Español)</div></div>	<div><div>Iglesia Evangelica Wilder</div><div>317 3rd st., Pastor Ramiro Reyes 10 am Sunday School 11 am Service 482-7484 Bilingual</div></div>	<div><div>Marsing Church of Christ Marsing</div><div>932 Franklin, Marsing Minister Gib Nelson Sunday Bible Study 10am Sunday Worship 11am</div></div>	
<div><div>Christian Church Homedale</div><div>110 W. Montana, 337-3626 Pastor Maurice Jones Sunday Morning Worship 11am Church school 9:45</div></div>	<div><div>Bible Missionary Church Homedale</div><div>West Idaho, 337-4437 Pastor Paul Miller Sunday School 10am Worship 11am Sunday Evening 7pm Wednesday Evening 7:30</div></div>	<div><div>Assembly of God Church Marsing</div><div>139 Kerry, 896-4294 Pastor Rick Sherrow Sunday School 10am Sunday Worship 11am & 6 pm</div></div>	
<div><div>Lizard Butte Baptist Church Marsing</div><div>Pastor London 116 4th Ave. W., 859-2059 Sunday worship 11am-12pm Sunday school 10 am-10:55am Sunday evening 7pm-8pm Wednesday evening 7pm-8pm Every 3rd Sat. family video at 6 pm</div></div>	<div><div>Nazarene Church Marsing</div><div>Pastor Bill O'Connor 896-4184 12 2nd Avenue West Worship Services - Sunday 11am and 6pm Teen Services Sundays 7:00 pm Sunday School - 9:45am Mid Week TLC Groups</div></div>	<div><div>Trinity Holiness Church Homedale</div><div>119 N. Main Pastor Samuel Page 337-5021 Sunday School 10am Sunday Morning Worship 11am Sunday Evening 7pm Thursday Evening 7:30pm</div></div>	
<div><div>Church of Jesus Christ of Latter Day Saints Marsing</div><div>215 3rd Ave. West, 896-4151 Bishop Streibel Sunday 1st Ward 9am Sunday 2nd Ward 12:30pm Primary 11am</div></div>	<div><div>Vision Community Church Marsing</div><div>221 West Main Marsing, Idaho 208-896-5407 Sunday School 9:30 a.m. Sunday Service 10:30 a.m. Adult, Kids & Youth Meetings Wed. 7:00 p.m.</div></div>	<div><div>United Methodist Church Wilder</div><div>Corner of 4th St. & B Ave. 880-8751 Pastor Carolyn Bowers Sunday Services 9:30am</div></div>	
<div><div>First Presbyterian Church Homedale</div><div>320 N. 6th W., 337-3060 Pastor Marianne Paul Sunday Morning Worship 11am Sunday School 11am</div></div>	<div><div>Calvary Holiness Church Wilder</div><div>Corner of 3rd St. & B Ave., • 761-7843 Pastor Matthew Hunt Sunday School: 10:00 a.m. Sunday Morning Worship: 11:00 a.m. Sunday Evening: 6:00 p.m. Wednesday Evening: 7:00 p.m. Food Pantry Open Fridays 10 am - Noon</div></div>	<div><div>Seventh Day Adventist Homedale</div><div>16613 Garnet Rd., 880-0902 or 453-9289 Pastor Chuck Dimick Sabbath School Sat. 9:30am Worship 11am Tuesday Prayer Mtg. 7:00 pm</div></div>	
<div><div>Iglesia Bautista Palabra de Esperanza Homedale</div><div>711 W. Idaho, 463-9569 Pastor Jose Diaz Servicios: Los Domingos 11:00 am</div></div>	<div><div>Our Lady Queen of Heaven Catholic Church - Oreana</div><div>2006 Mass Schedule - Saturdays 9:30am Jan. 14 - Feb. 25 - March 18 - April 22 May 13 - June 24 - July 22 - Aug. 12 Sept. 9 - Oct. 14 - Nov. 25 - Dec. 23 For more information, call St. Paul's Church, Nampa 466-7031</div></div>	<div><div>Vida Nueva Comunidad de Fe Wilder</div><div>Iglesia Vida Nueva UMC Esquina de 4 y Calle B en Wilder Domingos 5:00 pm Alabanza y predicacion Miercoles 4:30 pm Arte para niños Informes: 989 7508</div></div>	



HELP WANTED

Thanks to surgery I need help with my house cleaning & laundry, between Marsing and Homedale. 896-4638

Full-Time Custodian, benefits included, previous exp. required, to be filled anytime after Nov. 8. Call Marsing School District, 896-4111 x197 for application.

Medical Assistant 2 FT openings (Nampa & Marsing/ Homedale) Busy family practice environment. Competitive salary and benefit pkg. Req MA certification. Prefer 1 yr med office exp, bilingual skills (English/Spanish). Apply at: Terry Reilly Health Services, Attn: HR Spec. 211 16th Ave.N, POB 9, Nampa, ID 83653 EOE

LPN 2 FT openings (Caldwell & Marsing) Days M – F Family practice setting. Req LPN licensure. Prefer 1-yr med office exp &. bilingual skills (English/Spanish). Health/ dental/retirement. Complete or send application to: Terry Reilly Health Services, Attn: HR Spec, 211 16th Ave.N, POB 9, Nampa, ID 83653 EOE

HELP WANTED

LPN Nampa – FT No night or graveyard shifts. Health/dental/ disability/retirement pkg. Busy family practice clinic w/ multi clinicians incl triage unit. Req LPN licensure. Prefer 1 yr med off exp and bilingual skills (English/Spanish) Complete application at: Terry Reilly Health Services, Attn: HR Spec, 211 16th Ave N, Nampa, ID 83653 EOE

Parma Furniture looking for full-time sales person, Saturday’s necessary. Previous experience in appliance/ flooring/ furniture business helpful. Apply in person: 115 N. 3rd St., Parma

Owyhee County Fair Board part-time secretary position close date was incorrectly stated and closed as of 10/31/06. Any questions please call Teri at 337-3325

Agency needs talent! Models, Actors, Extras, Promotional work available now! Earn \$72-\$770 daily. Not a school. Call 208-433-9511

The Owyhee County Sheriff’s Department is accepting applications for the position of Patrol Deputy in the Grand View/ Bruneau and the Marsing areas of Owyhee County. Applicants must be able to meet minimum P.O.S.T. standards, pass a written and oral exam, a polygraph and an extensive background check. Applicants must be willing to live in the Grand View/Bruneau area. Beginning salary is \$12.53/hr to \$12.99/hr D.O.E. Applications may be picked up at the Owyhee County Sheriff’s Office in Murphy. Completed applications must be received at the Sheriff’s office by Saturday, November 11th, 2006. Owyhee County is an equal opportunity employer.

Drivers: Company. 1 year verifiable with 150k miles. CDL-A 40cpm! Full benefits. Vacation/ Holiday pay. WEL Companies 877-297-3084

Heavy equipment operator w/CDL & good driving record, light mechanic skills w/some general labor. Pay DOE. Call 573-5700 or fax resume to 208-337-3288 Homedale area.

Help Wanted

In-Home Care for teenage males w/ special needs

Homedale
M/W/F 9 am - 5 pm

Wilder
M-F 12-5:30 pm

Must have at least 3 months experience

\$8.75/hr

466-3196

Subscribe Today!

Please enter my subscription to the Owyhee Avalanche now! Enclosed is \$_____

NAME_____

ADDRESS_____

CITY_____

STATE_____ZIP_____

SUBSCRIPTION RATES:

Owyhee County.....\$31.80

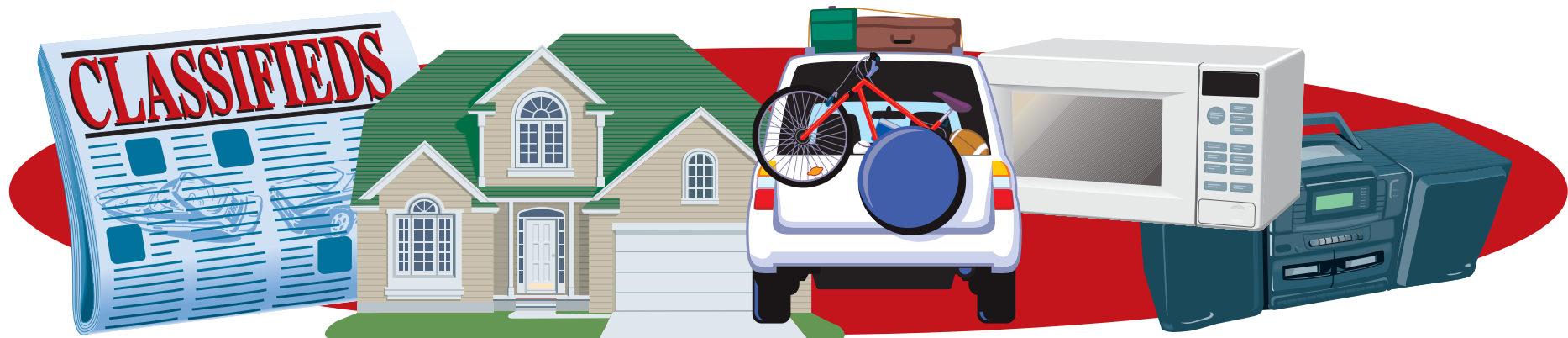
Canyon, Ada and Malheur Counties.....\$37.10

Elsewhere\$40.00

Idaho Sales Tax included

The Owyhee Avalanche

P.O. BOX 97 • HOMEDALE , ID 83628



REAL ESTATE
Fast Cash! Real Estate Equity
Loans American Financial (208)
389-9200

.41 acre lot fronting Hwy 95 bypass in Homedale. Has City Sewer and water. Would make great location for buisness. Zoned commercial.
\$79,000, call me for details.
Two 1 acre lots Near marsing. Two nice irrigated building lots in the country. Buy 1 or both. \$69,900 each.

Buyer wants home in Marsing area below 100K.
I have a buyer for "fixer uppers" in the Homedale, Marsing area.
Just listed. Two commercial lots on Owyhee Ave in downtown Homedale. \$40,000

Mountain Valley Properties

KENT SIMON
HOMEDALE, IDAHO
337-4170 • CELL: 484-0075
www.BuyMountainValley.com

Need Cash?

I CAN HELP!

- ❖ Buying Houses & Property
- ❖ Buying Contracts
- ❖ Loaning Money on Real Estate Equity
- ❖ Buying Estates

Call Mike Vance
208-389-9200

COLDWELL BANKER

ASPEN

OFFICE: 896-5312
GEORGE WILSON: 573-6405
JOHN CONTI: 880-7829 • DEE WILSON: 880-5405
BOB BRINEGAR: 250-2207 • DIXIE GERDES: 899-2784
View Properties At: www.idaholand4u.com

22 ACRES WITH APPROVED 14 LOT SUB. in Wilder 1/2 mile to River Bend Golf Course and Snake River. \$475,000 MLS98239271

1 ACRE BUILDING LOT In Watkins Glenn Sub, Wilder. Near Snake River and River Bend Golf Course. \$82,000 Call Dee MLS 98271462

2.5 ACRE BUILDING LOT ON THE SNAKE RIVER
Pressurized irrigation, great view of the Owyhees. \$198,760 MLS 98257219

BUILDING LOT IN MARSING That country feel, with city services. \$35,900. Call Bob MLS 98270361

3 BEDROOM, 2 BATH HOME ON 5.6 ACRES
Beautiful landscaping, fenced pasture w/ irrigation, 4-bay shop and garage, 58x30 steel barn/tack room, hay storage, 140x80 arena. Gorgeous view of the valley. PRICE REDUCED \$288,950 MLS 98254865

FARM & RANCH

For sale - reg. black Angus cows. 9 older spring calving cows, most were pathfinder cows; fall pairs you pick, also all yearling & spring bulls. Hyde Ranch Angus 208-834-2505

Wanted to buy dry shell corn A-D Feedlot, Jim Hoagland 466-6916 or 880-6902

For sale – Dorper Ram Sheep 11 months old, great for Christmas lamb dinner or breeder \$100. 337-4116 or 249-5189

Notice for farmland for lease at Marsing-Homedale Cemetery, approximately forty acres (40 acres). Call Rick Sherrow at Marsing-Homedale Cemetery 208-896-4226 for information.

40 tons grass hay \$85/ton, big bales, Vale, OR 208-859-4734

For rent, 42 acres, Fish Road, Wilder near River Bend Golf Course. Available immediately 208-896-5006 or 208-861-5867

For sale: Hay & straw. Oat hay \$80/ton. Alfalfa hay \$100-120/ton. Straw \$2.50/bale. No Sunday calls. Call Gary 337-3936 or 941-9417

Homedale Feedlot/Ranch:
249+/- ac with 950 head CAFO feedlot. Home/out-buildings/horse facilities. \$1,350,000

Hillside Acres: 417+/- ac in 2 parcels in Adrian, OR. Irrigation, Views of the Snake River, Home/outbuildings. \$898,000
*parcels can be purchased separately

KNIFE LAND CO.
RANCHES • HOMES • COMMERCIAL
Established 1944

for additional properties
www.knipeland.com
CALL: 208/345-3163

FOR RENT

1+ bdrm house, newly remodeled \$385 + \$250 dep. W/ S/T pd. 337-4539

2 bdrm 1 bth MH, pets allowed, \$350 + \$125 dep. 337-9970

3700 sq. ft. Main St., Marsing location. Nice building \$750 mo. Triple net. Also, will sell. 250-4454

One bedroom apartment in Homedale. Partially furnished. \$375 plus deposit. 495-2809

Homedale 4 bdrm 2 bth, 2 kitchens, 2 living rooms, two families ok. \$800 mo. + \$600 dep. 573-1704

Boat & RV Storage, Marsing Storage 867-2466

FOR SALE

Fisher wood stove w/accessories very good condition \$300 OBO 337-3873/ 899-9130/ 794-3601/ 337-3425

Nice wood stove, brick-lined fire box \$100; 25" GE console color TV remote control \$25. 337-3716 evenings.

Fun private piano, guitar, violin or fiddle lessons. Affordable rates. 283-5750

Microfiber couch & love seat, stain resistant, lifetime warranty, brand new in boxes. Retail \$1495. Must sell \$499. 208-888-1464

Bedroom set 7-piece cherry set. Brand new in boxes. List \$2250. Must sell \$450. 208-888-1464

Bed-queen pillowtop mattress set. Brand new, still in plastic, warranty. Retail \$599. Sell \$119! 208-921-6643

King-sized pillowtop mattress set. New, in bag, with warranty. List \$750. Sacrifice \$199. 208-921-6643

Cherry Sleigh bed. Solid wood. New in box. Value \$799. Sacrifice \$195. 208-888-1464

Bedroom set, cherrywood, solid wood construction. Sleigh bed, 2 nightstands, dresser w/mirror, tall chest, TV armoire, dovetail drawers. Will sell all or part. Cost \$10,000, sell \$2,900. 208-362-7150

Dining set, cherrywood, 63" hutch & buffet, 78" table w/2 leaves, 6 curved back chairs. Dovetail drawers. Side server also available. Cost \$9,000 sell \$2,800 firm. 208-362-7150

Pool table, 8 ft. table, 1" slate, leather pockets, Aramith balls, acc. Pkg. included. New in box. Cost \$4,500 sell \$1450. 208-362-7150

Queen orthopedic pillow-top mattress & box. New in plastic. Cost \$400 sacrifice \$195. 208-919-3080

Mattress, king pillow-top & box. Never used. Still in factory wrapper. Cost \$550 sacrifice \$295. 208-919-3080

Used tractor parts 100's of salvaged farm tractors and combines. Nampa Tractor Salvage, 9055 Hwy 20, Nampa, ID 83687 (208) 467-4430

Roll ends: Great for packing material, building fires, lining birdcages or for your kids to doodle on. The Owyhee Avalanche, Homedale

BUS. OPP.

For sale – Consignment furniture business located at 114 W. Idaho Ave. Sale includes: established cliental, business name, cash register, refrigerator, watercooler, business account, insurance and taxes paid through Dec. Transfer of building lease would have to be ok'd before sale. Call for info 337-4449 or 249-9356 \$2000.00 or best offer

VEHICLES

Snowmobile 2002 800 RMK \$3500. 337-3312

2006 ATV's New 50cc, 110cc, 150cc, 250cc. Special prices!!! Call for details. DL#3024 208-896-5720

FREE

Free - older pool table, you move. 337-4539

LOST

Border collie w/bobtail, neutered male, has reflective collar on, lost Saturday Dunlap Rd. 896-5280

SERVICES

Hey ladies are you tired of driving to town to get your nails done? Problem solved. I have opened up a nail shop in your area. I've had my own nail shop for the last 10 years in Boise. Specialize in acrylic & nail art. Appointments only. High Desert Nails 495-2108

Daycare 3 FT openings, ICCP approved, all meals provided, preschool program available, lots of activities. Call Donna 337-6180

Best price for on-site computer cleaning and repair. Call Tom or Colette at 899-9419 or 896-4676, Technical Computer.

Tim's Small Engine Repair: Complete servicing & repair available on lawnmowers, tillers, wheel-line motors, motorcycles, ATVs, all 2 & 4 cycle power equipment. Karcher pressure washer factory authorized repair center. 30916 Peckham Rd., 5 miles west of Wilder. 482-7461

WE MAKE A GREAT IMPRESSION

You'll be impressed by the quality of our work and our personalized service

We're a multi-faceted print shop providing complete services from graphic design and typesetting through printing and binding, so no part of your job ever leaves our hands.

We offer consistant results at competitive prices.

337-4866

All types of web and commercial printing

Owyhee Publishing

P.O. BOX 217 HOMEDALE, ID 83628

Subscribe Today! The Owyhee Avalanche • 208-337-4681

Holiday Party 101

MAKE IT EASY,
MAKE IT FUN

FAMILY FEATURES

Caterer your own New Year’s Eve party this year? Then do what the catering pros do — shop smart, add luxurious touches and do as much as you can ahead of time.

First of all, shop like a caterer. Select good quality frozen hors d’oeuvres like mini quiches, crostini or cooked shrimp that only need to be crisped in the oven or served at room temperature. Frozen cakes and miniature cream puffs only need thawing, a drizzle of wonderful sauce and a holiday garnish to look and taste great. Affordable luxuries like caviar and fine chocolates make a festive statement without costing you hours in the kitchen.

Secondly, consider this caterer’s secret: Quality ingredients need only simple preparation to dazzle. You can easily begin roasting a beef tenderloin in the oven while preparing the Crab and Ruby Grapefruit Salad with premium ingredients. Accompany your party dish with an effortless but gourmet sauce or dressing that can be made ahead of time to really wow your guests.

And finally, do what caterers do: Let “make ahead” be your mantra. The more food preparation you can do before your party, like making and freezing the fabulous Ginger Champagne Granita, the more you’ll relax and have fun. After all, it’s your party.

For more great holiday foods and recipes, visit your local Sam’s Club or shop online at www.samsclub.com.



Crab and Ruby Grapefruit Salad With White Wine Vinaigrette and Chef Sarah’s Chocolate Sauce for Cream Puffs

Perfect Wines for the Season

Do you sometimes feel overwhelmed by the array of wines available and uncertain on what to choose? To help, follow this guide for wines to compliment a New Year’s Eve party, to wrap as gifts or to serve with dinner. This selection of award winning wines provides both great quality and value, and all are available at Sam’s Club. To learn more about great wine and meal pairings, please visit www.samsclub.com.

Champagnes

- Moët et Chandon White Star
- Veuve Cliquot Ponsardin Brut
- Dom Perignon

Pair With Dinner

- Montevina Terra d’Oro Red Zinfandel
- Red Knot Cabernet Sauvignon
- VEO Grande Cabernet Sauvignon

Great Gifts and Party Pleasers

- Nachtgold Eiswein
- Mezzacornoa Pinot Grigio
- Francis Coppola Merlot



Ginger Champagne Granita

Makes: 6 servings

- 1 bottle Veuve Cliquot Ponsardin Brut champagne
- 2 to 3 teaspoons freshly grated ginger
- 6 tablespoons sugar
- 2 tablespoons lemon zest

Put all ingredients into heavy saucepan and bring just to a boil, stirring constantly. Pour into bowl and cool to room temperature. Pour mixture into 8-inch square

metal baking pan. Freeze until icy around edges (about 45 minutes). Use a fork to rake frozen edges toward the center. Repeat raking into the center every 30 minutes until frozen through, about 5 hours total. Cover; keep frozen.

To serve, use large spoon or ice cream scoop to mold. Serve in a martini glass, frosted parfait glass or in a small dish. Garnish with fresh mint and berries. This can be made up to 2 days ahead.

Crab and Ruby Grapefruit Salad With White Wine Vinaigrette

Winter greens are topped with delicate grapefruit and crab for a light salad that provides a break from the rich flavors of the soup and the main course to follow.

Makes: 8 servings

- 2 bunches watercress, washed and dried
- 1/2 pound Belgian endive, washed, dried and torn into pieces
- 3 cups baby spinach or arugula, washed and dried
- 2 cups lump crab meat
- 3 ruby grapefruits, peeled and segmented

Dressing

- 2 cups dry white wine (Fume Blanc or Chardonnay)
- 2 medium shallots, peeled and finely minced
- Grated zest of 1 large lemon
- 2 tablespoons fresh lemon juice
- 1 tablespoon white wine vinegar
- 1 teaspoon salt (more if needed)
- 1/2 teaspoon freshly ground black pepper
- 1 to 1-1/2 cups extra virgin olive oil
- 1 cup pomegranate seeds (optional)

For the vinaigrette, place wine in saucepan and bring to a boil. Turn down to simmer and reduce to 1/2 cup liquid. Remove from heat and add shallots and lemon zest. Let cool to room temperature. Transfer to a bowl. Whisk in lemon juice, vinegar, salt and pepper. Continue whisking and add oil; stop to taste (you may

not need all the oil). Dressing should be tangy and full flavored. Set aside. Dressing can be made 2 days in advance and refrigerated.

In large bowl, toss together greens, crab and grapefruit. Pour dressing over salad and toss to coat evenly.

Chef Sarah’s Chocolate Sauce for Cream Puffs

With the addition of a luxurious chocolate sauce, frozen cream puffs from Sam’s Club (Poppies International) are an elegant conclusion to this festive meal. Garnish the plate with toasted almonds or hazelnuts. This silky sauce can be served immediately, or cooled and refrigerated up to 2 weeks. Reheat slowly in the microwave.

Makes: 8 servings

- 1-1/4 cups water
- 1/2 cup sugar
- 1/4 cup light corn syrup
- 3/4 cup unsweetened cocoa powder, sifted (Dutch processed)
- Pinch of salt
- 2 ounces bittersweet chocolate, chopped
- 2 tablespoons unsalted butter

In a small saucepan, combine water, sugar and corn syrup and bring to simmer.

Separately in a small bowl, whisk together cocoa powder and salt. Whisk into hot water mixture, making sure to break up any lumps of cocoa. Whisk until well combined; remove from heat.

Break up bittersweet chocolate and whisk into hot cocoa mixture. When it is melted, add butter and continue whisking until well combined and smooth. Serve over frozen cream puffs once sauce is slightly cooled.